

# ARA-DAC Weekly Analysis Result: 2410 (GFA)

## Technical Report

**GPS Week: 2410 (GFA)**

<http://geolabpasaia.org/gnss/ARA-euref/>

**ARA-DAC details:**

Contact person: J. Zurutuza

Contact mail: [geodesia@aranzadi.eus](mailto:geodesia@aranzadi.eus)

Report generated on 2026/04/06 at 00:55:11



**ARANZADI** zientzia elkartea  
sociedad de ciencias . society of sciences . société de sciences

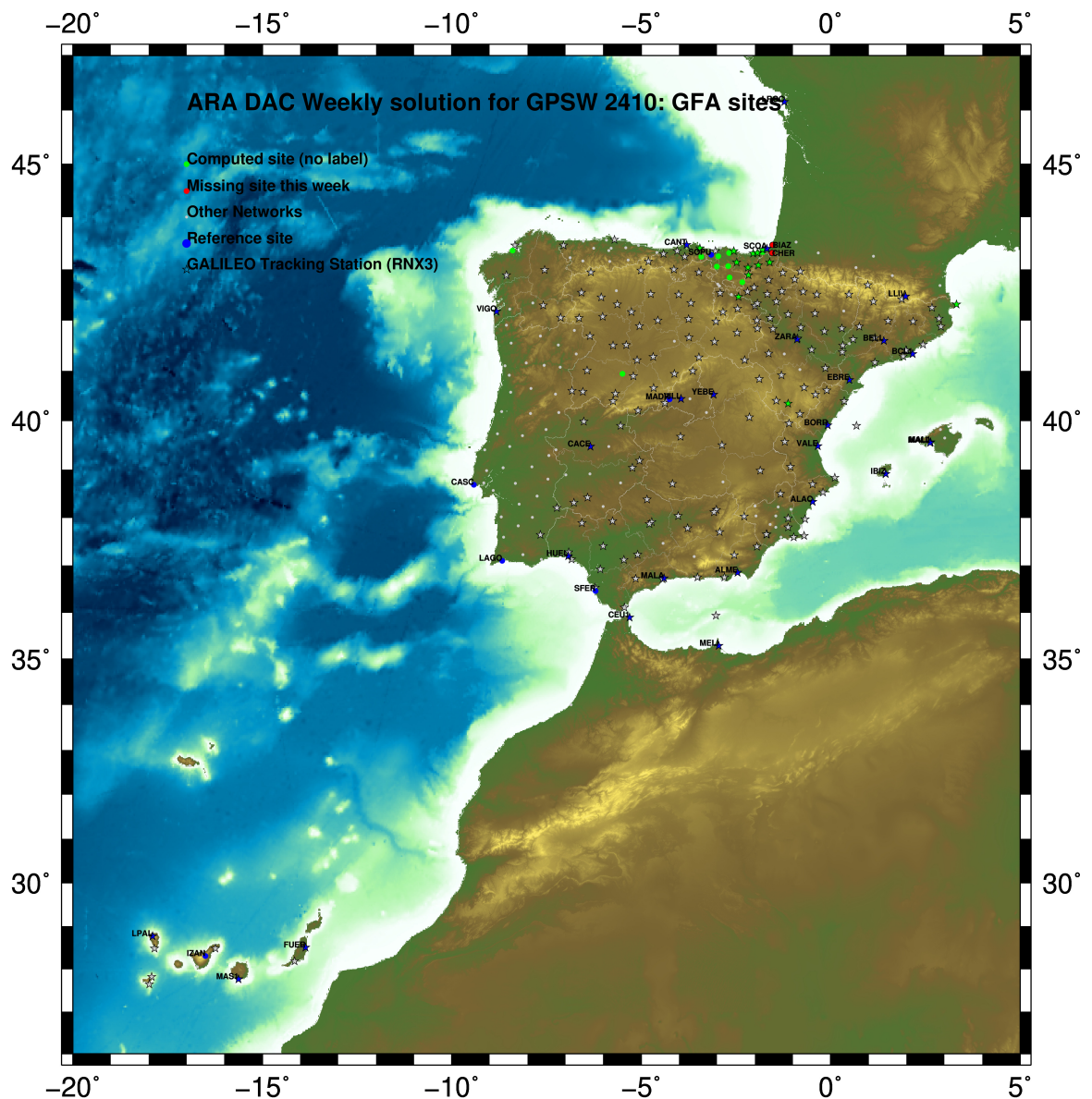
## Contents

<b>1</b>	<b>Introduction</b>	<b>3</b>
<b>2</b>	<b>Map of Computed Sites</b>	<b>3</b>
<b>3</b>	<b>Main Computation Parameters</b>	<b>4</b>
<b>4</b>	<b>Estimated Parameters</b>	<b>4</b>
<b>5</b>	<b>Computed Coordinates</b>	<b>6</b>
5.1	IGS20 . . . . .	6
5.2	ETRF2000 (ETRS89) Coordinates . . . . .	6
5.3	ETRF2014 (ETRS89) Coordinates . . . . .	7
5.4	ETRF2020 (ETRS89) Coordinates . . . . .	7
<b>6</b>	<b>Quality Control</b>	<b>8</b>
6.1	Mean and Daily Repeatabilities . . . . .	8
6.2	Datum verification . . . . .	10
6.3	Adjustment Statistics . . . . .	11
<b>7</b>	<b>Equipment</b>	<b>11</b>
7.1	Receiver List . . . . .	11
7.2	Antennas . . . . .	11
7.3	Eccentricities . . . . .	12
<b>8</b>	<b>Inconsistencies (logsheet-RINEX metadata)</b>	<b>12</b>
<b>9</b>	<b>References</b>	<b>14</b>
<b>10</b>	<b>Cumulative Time Series</b>	<b>15</b>

# 1 Introduction

In may 2015 ARA (EUREF's acronym of the ARANZADI's Department of Applied Geodesy), kicks off as a EUREF's Operational Center. In July 2015, the Densification solutions ARA computes routinely in a weekly basis start being submitted to the EUREF's EPN Densification Project.

# 2 Map of Computed Sites



GM 2026 Apr 06 00:55:06

Fig.1: Computed Sites for GPS Week2410 (GFA)

### 3 Main Computation Parameters

The main parameters considered in the ARA analysis follow strictly the EPN recommendations.

- Preprocessing: Independent baselines are defined by the criterion of maximum common observations. Cycle slips are fixed with the MAUPRP program, analysing triple phase differences for each independent baseline. If MAUPRP does not fix all slips for one station, that station is edited out.
- Basic Observable : Carrier phase,  $L_1$  and  $L_2$ ; a priori sigma of single differences: 0.002 m.
  - sampling (for ambiguity resolution): 30 s
  - sampling (for final processing): 180 s
  - Systems: GPS+GLONASS observations are used (Galileo is used if available starting GPS week 1986)
- Modelled observable: Double differences of carrier phase using different combinations based on the distance.
- Ground antenna phase center calibrations: Group APCV used from the PCV\_COD.I20 file and individual calibrations from EPNC\_20.ATX. In case no calibration values of an antenna/radome pairs are not available for a certain GNSS system at some station, the observation of this/these GNSS/GNSSs are excluded from the analysis of that station.
- Reference sites: the latest IGS cumulative solution is used to align our solution to the latest IGS20 release, regularly updated and available at: IGS0OPSSNX\_1994002\_00U\_00U\_CRD.SNX.gz. Following the EUREF guidelines, no other individual calibrations are included in the analysis starting GPSW 2238 (IGS20); also applies to repro3 solutions, which are based on IGS20 standards.
- Troposphere:
  - minimum elevation is 3 deg.; elevation dependent weighting.
  - VMF3 mapping function. ZPD parameters are estimated using the VMF3 mapping function.
  - CHENHER gradient estimation model.
- Ionosphere: no a priori model, ionospheric effect almost removed by iono free combination.
- Ocean Loading: FES2014b (Scherneck).
- Atmospheric loading: not corrected, following the latest recommendations for IGS20 products.
- Tidal displacements:
  - Mean pole model : IERS2010\_v1.2.0
  - Subdaily pole model: DESAI2016
  - Nutation model : IAU2000R06

### 4 Estimated Parameters

- Adjustment: Least Squares
- Rejection Criteria:  $3 \times \text{rms}$  of single differences, in the weekly combination of daily normal equations (ADDNEQ)
- Station coordinates: minimum constraints (MC) to IGS sites (only translations).
- Troposphere: 3 deg. After having obtained coordinates valid for the entire week, tropospheric zenith delay is solved at each site at intervals of 1 hour throughout the week, holding the coordinates constrained at the weekly values.

- Ionospheric: second and third "High Order Ionosphere (HOI)" corrections used, using CODE files, to improve Ambiguity Resolution.
- Satellite clock bias: not estimated because are eliminated by double differencing the phase data.
- Receiver clock bias: not estimated because are eliminated by double differencing the phase data.
- Orbits and ERPs: CODE's orbits and ERP for both rapid and final solutions. DE421 planetary ephemeris and JGM3 Earth geopotential model is used.
- Ambiguity: an advanced ambiguity resolution (AR) scheme is included:
  - Code-Based Widelane (WL) and Narrow Line (NR) AR for baselines shorter than 6000km, a Melbourne-Wuebbena wide-lane and narrow-lane AR is computed.
  - Phase-Based Widelane ( $L_5$ ) AR for baselines shorter than 200km, the code-based wide-lane AR is replaced by a phase-only wide-lane with a subsequent narrow-lane AR.
  - Quasi-Ionosphere-Free (QIF) AR for the remaining real-valued ambiguities for baselines shorter than 2000km.
  - Direct  $L_1/L_2$  AR for baselines shorter than 20km
- AR Verification: Each baseline is processed by introducing the resolved integer ambiguities and checking the residuals. If there is any problem, the ambiguities are re-initialized.

## 5 Computed Coordinates

In this section the adjusted coordinates are summarized. Note that the sites with an A flag are the computed ones, whereas sites flagged as W (IGS cumulative solution) are the ones used in the Minimal Constraints condition.

### 5.1 IGS20

The Reference Frame considered in this section is the IGS20 (IGS cumulative solution), mapped from 2015.0 to the observation epoch.

ARA FINAL WEEKLY COMBINATION: FINAL ORBITS 05-APR-26 23:25

---

LOCAL GEODETIC DATUM: IGS20 EPOCH: 2026-03-18 11:59:45

NUM	STATION NAME	X (M)	Y (M)	Z (M)	FLAG	SYSTEM
111	ACOR 13434M001	4594489.46681	-678367.23059	4357066.33287	A	G
39	ALDA 19383M001	4687280.08710	-190876.43403	4308107.03609	A	GR
50	ALSA 19419M001	4677250.76204	-176770.26375	4319079.95427	A	GRE
53	AMUR 19388M001	4661499.37633	-244591.12610	4332269.95934	A	GR
101	BIDA 00000M000	4644177.74574	-145778.19085	4354832.55858	A	GR
113	BRZR 19387M001	4662220.91797	-220769.76840	4333309.51557	A	GR
573	CACE 13447M001	4899866.44433	-544566.90366	4033770.28998	W	GRE
592	CANT 13438M001	4625924.24506	-307096.10540	4365771.63759	W	GRE
908	CREU 13432M001	4715420.05431	273178.19003	4271946.92424	A	GRE
135	EBRE 13410M001	4833519.91492	41537.52467	4147461.80378	W	GRE
180	ELGE 19353S001	4657557.32332	-202241.34064	4338991.96678	A	GRE
182	EMAZ 17001M001	4645924.13758	-276949.73898	4347759.64558	A	GR
209	GERN 19389M001	4642811.24539	-217222.79379	4353278.95304	A	GR
257	HOND 15012M002	4640529.24411	-145675.85509	4358781.83567	A	GRE
235	IGEL 19352S001	4645951.35067	-165574.37267	4352550.50161	A	GRE
240	ISPS 19484M001	4640596.40987	-206963.64854	4356391.99843	A	GRE
245	KAST 19499M001	4646949.00260	-240747.13574	4348015.07105	A	GR
252	LARE 19440M001	4632831.88511	-279026.01456	4360314.50712	A	GRE
256	LAZK 19354S001	4666098.26955	-178186.06189	4330463.75106	A	GRE
261	LEIT 19428M001	4663520.86221	-155858.58853	4334519.96553	A	GRE
334	ORON 19427M001	4659695.70503	-130864.60557	4339948.96450	A	GRE
345	PASZ 19351S001	4644908.98580	-156644.93858	4353623.15540	A	GRE
493	PASA 19351S001	4644908.98646	-156644.93897	4353623.15552	A	GRE
553	RID1 13448M002	4708446.75627	-199490.15162	4284089.81431	A	GRE
558	SALA 13469M001	4803054.42018	-462130.93923	4158379.15855	A	GR
526	SCDA 10088M002	4639940.43172	-136224.81246	4359552.50068	W	GRE
715	SOPU 19386M001	4643997.83442	-255913.77722	4350063.21692	W	GR
443	TERU 13487M001	4867391.24717	-95523.21296	4108341.76347	A	GRE
493	VITO 19385M001	4679397.62837	-218436.37380	4314898.44925	A	GR
616	YEBE 13420M001	4848724.49857	-261631.79608	4123094.40927	W	GRE
655	ZARA 13462M001	4773803.09273	-73505.85517	4215454.17301	W	GRE

### 5.2 ETRF2000 (ETRS89) Coordinates

European Terrestrial Reference System, 1989 (ETRS89) is realized by ETRF2000 (Boucher and Altamimi, 2011) and (Altamimi, 2017).

CONVERT TO ETRF2000 05-APR-26 23:25

---

LOCAL GEODETIC DATUM: ETRF2000 EPOCH: 2026-03-18 11:59:45

NUM	STATION NAME	X (M)	Y (M)	Z (M)	FLAG	SYSTEM
111	ACOR 13434M001	4594489.82597	-678367.90129	4357065.83072	A	
39	ALDA 19383M001	4687280.51191	-190877.11558	4308106.53269	A	
50	ALSA 19419M001	4677251.18980	-176770.94397	4319079.45201	A	
53	AMUR 19388M001	4661499.79551	-244591.80450	4332269.45752	A	
101	BIDA 00000M000	4644178.18097	-145778.86676	4354832.05982	A	
113	BRZR 19387M001	4662221.34065	-220770.44684	4333309.01404	A	
573	CACE 13447M001	4899866.79509	-544567.61280	4033769.76167	W	
592	CANT 13438M001	4625924.65815	-307096.77943	4365771.13812	W	
908	CREU 13432M001	4715420.54233	273177.50661	4271946.42501	A	
135	EBRE 13410M001	4833520.35925	41536.82539	4147461.29029	W	
180	ELGE 19353S001	4657557.74913	-202242.01843	4338991.46595	A	
182	EMAZ 17001M001	4645924.55345	-276950.41550	4347759.14472	A	
209	GERN 19389M001	4642811.67077	-217223.46973	4353278.45335	A	
257	HOND 15012M002	4640529.67969	-145676.53054	4358781.33724	A	
235	IGEL 19352S001	4645951.78288	-165575.04887	4352550.00239	A	
240	ISPS 19484M001	4640596.83559	-206964.32418	4356391.49909	A	
245	KAST 19499M001	4646949.42367	-240747.81228	4348014.57063	A	
252	LARE 19440M001	4632832.30175	-279026.68940	4360314.00743	A	
256	LAZK 19354S001	4666098.69808	-178186.74069	4330463.24980	A	
261	LEIT 19428M001	4663521.29427	-155859.26695	4334519.46484	A	
334	ORON 19427M001	4659696.14104	-130865.28342	4339948.46453	A	
345	PASZ 19351S001	4644909.41938	-156645.61462	4353622.65641	A	
493	PASA 19351S001	4644909.42004	-156645.61501	4353622.65653	A	
553	RID1 13448M002	4708447.17780	-199490.83587	4284089.30883	A	
558	SALA 13469M001	4803054.79340	-462131.63608	4158378.64043	A	
526	SCDA 10088M002	4639940.86872	-136225.48780	4359552.00245	W	
715	SOPU 19386M001	4643998.25349	-255914.45342	4350062.71655	W	
443	TERU 13487M001	4867391.66857	-95523.91699	4108341.24485	A	
493	VITO 19385M001	4679398.04981	-218437.05442	4314897.94617	A	
616	YEBE 13420M001	4848724.89748	-261632.49824	4123093.88992	W	
655	ZARA 13462M001	4773803.52642	-73506.54732	4215453.66336	W	

### 5.3 ETRF2014 (ETRS89) Coordinates

European Terrestrial Reference System, 1989 (ETRS89) is realized by ETRF2014 (Boucher and Altamimi, 2011) and (Altamimi, 2017).

```

CONVERT TO ETRF2014                                05-APR-26 23:25
-----
LOCAL GEODETIC DATUM: ETRF2014                    EPOCH: 2026-03-18 11:59:45
NUM STATION NAME      X (M)      Y (M)      Z (M)  FLAG  SYSTEM
111 ACRD 13434M001    4594489.78664 -678367.93737 4357065.88415  A
39 ALDA 19383M001    4687280.46991 -190877.15316 4308106.58597  A
50 ALSA 19419M001    4677251.14787 -176770.98166 4319079.50533  A
53 AMUR 19388M001    4661499.75401 -244591.84199 4332269.51086  A
101 BIDA 00000M000    4644178.13931 -145778.90473 4354832.11327  A
113 BRZR 19387M001    4662221.29906 -220770.48442 4333309.06739  A
573 CACE 13447M001    4899866.75164 -544567.64796 4033769.81419  W
592 CANT 13438M001    4625924.61728 -307096.81684 4365771.19155  W
908 CREU 13432M001    4715420.49811 273177.46735 4271946.47856  A
135 EBRE 13410M001    4833520.31457 41536.78759 4147461.34329  W
180 ELGE 19353S001    4657557.70753 -202242.05611 4338991.51932  A
182 EMAZ 17001M001    4645924.51225 -276950.45293 4347759.19809  A
209 GERN 19389M001    4642811.62939 -217223.50742 4353278.50676  A
257 HOND 15012M002    4640529.63808 -145676.56852 4358781.39070  A
235 IGEL 19352S001    4645951.74127 -165575.08675 4352550.05582  A
240 ISPS 19484M001    4640596.79420 -206964.36192 4356391.55252  A
245 KAST 19499M001    4646949.38233 -240747.84986 4348014.62402  A
252 LARE 19440M001    4632832.26070 -279026.72689 4360314.06085  A
256 LAZK 19354S001    4666098.65628 -178186.77842 4330463.30316  A
261 LEIT 19428M001    4663521.25243 -155859.30478 4334519.51822  A
334 ORDN 19427M001    4659696.09915 -130865.32136 4338948.51793  A
345 PAS2 19351S001    4644909.37775 -156645.65253 4353622.70985  A
493 PASA 19351S001    4644909.37841 -156645.65292 4353622.70997  A
553 RIO1 13448M002    4708447.13558 -199490.87332 4284089.36204  A
558 SALA 13469M001    4803054.75092 -462131.67203 4158378.69325  A
526 SCOA 10088M002    4639940.82707 -136225.52582 4359552.05592  W
715 SOPU 19386M001    4643998.21224 -255914.49095 4350062.76994  W
443 TERU 13487M001    4867391.62402 -95523.95408 4108341.29765  A
493 VITO 19385M001    4679398.00801 -218437.09193 4314897.99946  A
616 YEBE 13420M001    4848724.85376 -261632.53477 4123093.94268  W
655 ZARA 13462M001    4773803.48294 -73506.58495 4215453.71644  W
    
```

### 5.4 ETRF2020 (ETRS89) Coordinates

European Terrestrial Reference System, 1989 (ETRS89) is realized by ETRF2020 (Boucher and Altamimi, 2011) and (Altamimi, 2017).

```

CONVERT TO ETRF2020                                05-APR-26 23:25
-----
LOCAL GEODETIC DATUM: ETRF2020                    EPOCH: 2026-03-18 11:59:45
NUM STATION NAME      X (M)      Y (M)      Z (M)  FLAG  SYSTEM
111 ACRD 13434M001    4594489.78261 -678367.92233 4357065.89216  A
39 ALDA 19383M001    4687280.46454 -190877.13762 4308106.59425  A
50 ALSA 19419M001    4677251.14243 -176770.96615 4319079.51359  A
53 AMUR 19388M001    4661499.74874 -244591.82656 4332269.51908  A
101 BIDA 00000M000    4644178.13368 -145778.88931 4354832.12148  A
113 BRZR 19387M001    4662221.29371 -220770.46898 4333309.07562  A
573 CACE 13447M001    4899866.74804 -544567.63187 4033769.82275  W
592 CANT 13438M001    4625924.61211 -307096.80155 4365771.19970  W
908 CREU 13432M001    4715420.49141 273177.48318 4271946.48697  A
135 EBRE 13410M001    4833520.30889 41536.80371 4147461.35186  W
180 ELGE 19353S001    4657557.70211 -202242.04067 4338991.52755  A
182 EMAZ 17001M001    4645924.50704 -276950.43757 4347759.20628  A
209 GERN 19389M001    4642811.62398 -217223.49204 4353278.51496  A
257 HOND 15012M002    4640529.63244 -145676.55311 4358781.39891  A
235 IGEL 19352S001    4645951.73571 -165575.07133 4352550.06404  A
240 ISPS 19484M001    4640596.78875 -206964.34654 4356391.56072  A
245 KAST 19499M001    4646949.37700 -240747.83447 4348014.63222  A
252 LARE 19440M001    4632832.25547 -279026.71156 4360314.06901  A
256 LAZK 19354S001    4666098.65081 -178186.76295 4330463.31140  A
261 LEIT 19428M001    4663521.24688 -155859.28930 4334519.52646  A
334 ORDN 19427M001    4659696.09351 -130865.30589 4338948.52618  A
345 PAS2 19351S001    4644909.37215 -156645.63712 4353622.71806  A
493 PASA 19351S001    4644909.37281 -156645.63751 4353622.71818  A
553 RIO1 13448M002    4708447.13029 -199490.85771 4284089.37036  A
558 SALA 13469M001    4803054.74675 -462131.65622 4158378.70167  A
526 SCOA 10088M002    4639940.82140 -136225.51042 4359552.06412  W
715 SOPU 19386M001    4643998.20696 -255914.47558 4350062.77813  W
443 TERU 13487M001    4867391.61886 -95523.93792 4108341.30625  A
493 VITO 19385M001    4679398.00270 -218437.07642 4314898.00772  A
616 YEBE 13420M001    4848724.84908 -261632.51873 4123093.95122  W
655 ZARA 13462M001    4773803.47744 -73506.56907 4215453.72489  W
    
```

## 6 Quality Control

### 6.1 Mean and Daily Repeatabilities

In this section, the mean and daily repeatabilities of the sites are shown. Repeatabilities refer to the IGS20 solution and are given with respect to the Local frame (North-East-Up).

GFA FINAL WEEKLY COMBINATION: FINAL ORBITS 05-APR-26 23:25

Station	#Days	Weekday 0123456	Repeatability (mm)		
			N	E	U
ACOR 13434M001	7	XXXXXX	3.95	0.98	3.33
ALDA 19383M001	7	XXXXXX	2.80	0.94	3.96
ALSA 19419M001	7	XXXXXX	3.80	1.15	3.85
AMUR 19388M001	7	XXXXXX	0.97	0.67	2.86
BIDA 00000M000	7	XXXXXX	0.82	0.86	3.25
BRZR 19387M001	7	XXXXXX	1.08	1.17	4.83
CACE 13447M001	7	XXXXXX	0.92	0.72	2.99
CANT 13438M001	7	XXXXXX	0.89	0.47	3.63
CREU 13432M001	7	XXXXXX	1.12	0.57	4.63
EBRE 13410M001	7	XXXXXX	1.40	1.68	4.78
ELGE 19353S001	7	XXXXXX	0.88	1.10	2.67
EMAZ 17001M001	7	XXXXXX	1.13	0.38	3.33
GERN 19389M001	7	XXXXXX	0.99	0.37	2.22
HOND 15012M002	7	XXXXXX	1.04	0.48	3.64
IGEL 19352S001	7	XXXXXX	1.37	0.80	1.94
ISPS 19484M001	7	XXXXXX	0.74	0.46	3.52
KAST 19499M001	7	XXXXXX	0.86	0.62	4.02
LARE 19440M001	7	XXXXXX	1.23	1.00	1.89
LAZK 19354S001	7	XXXXXX	1.27	0.76	5.74
LEIT 19428M001	7	XXXXXX	1.04	1.17	4.34
ORON 19427M001	7	XXXXXX	1.58	0.96	2.56
PAS2 19351S001	4	X XXX	0.61	0.36	3.86
PASA 19351S001	7	XXXXXX	0.72	0.35	3.09
RI01 13448M002	7	XXXXXX	1.50	0.64	3.23
SALA 13469M001	7	XXXXXX	1.25	0.65	3.31
SCDA 10088M002	7	XXXXXX	1.38	1.04	2.61
SOPU 19386M001	7	XXXXXX	0.87	0.51	2.93
TERU 13487M001	7	XXXXXX	0.81	0.62	2.89
VITO 19385M001	7	XXXXXX	1.29	0.81	3.66
YEBE 13420M001	7	XXXXXX	1.43	0.57	3.28
ZARA 13462M001	7	XXXXXX	0.90	0.57	4.81

Comparison of individual solutions:

ACOR 13434M001	N	3.95	-0.07	2.68	2.22	1.00	-0.02	0.59	-8.96
ACOR 13434M001	E	0.98	-0.71	1.35	-0.17	-0.35	-1.75	-0.06	0.38
ACOR 13434M001	U	3.33	0.79	-5.00	-0.32	1.45	-4.52	3.70	2.15
ALDA 19383M001	N	2.80	3.61	1.04	2.57	0.37	-3.18	-0.86	3.92
ALDA 19383M001	E	0.94	0.41	-0.98	-0.81	-1.05	1.22	0.84	0.45
ALDA 19383M001	U	3.96	-3.46	3.82	5.68	2.65	-3.04	-2.13	3.80
ALSA 19419M001	N	3.80	7.32	1.47	-1.08	-1.05	0.26	-5.26	0.94
ALSA 19419M001	E	1.15	-1.20	-0.75	-0.71	0.71	0.99	1.49	1.30
ALSA 19419M001	U	3.85	-0.70	3.34	5.06	1.74	-5.23	2.52	3.85
AMUR 19388M001	N	0.97	0.44	-0.74	0.78	1.75	0.47	0.92	-0.34
AMUR 19388M001	E	0.67	1.16	-0.23	0.05	-1.11	-0.21	-0.01	0.16
AMUR 19388M001	U	2.86	2.86	-0.56	4.53	0.06	-2.09	3.37	2.09
BIDA 00000M000	N	0.82	0.35	0.06	0.83	1.37	-0.58	0.72	0.71
BIDA 00000M000	E	0.86	-1.64	-0.37	0.62	-0.05	0.72	0.85	0.11
BIDA 00000M000	U	3.25	3.95	-1.69	3.61	0.60	1.00	-3.13	4.54
BRZR 19387M001	N	1.08	0.14	0.02	2.13	1.40	-0.64	0.28	0.15
BRZR 19387M001	E	1.17	1.12	1.06	1.33	-1.17	-1.57	-0.37	0.26
BRZR 19387M001	U	4.83	8.25	3.47	1.71	-1.23	-6.38	-0.09	3.82
CACE 13447M001	N	0.92	-0.35	0.74	-0.29	-0.40	0.50	-0.96	-1.72
CACE 13447M001	E	0.72	0.27	0.12	0.05	-1.20	-0.92	-0.34	-0.79
CACE 13447M001	U	2.99	-2.16	-5.01	-1.65	-1.61	2.12	1.32	-3.50
CANT 13438M001	N	0.89	-0.80	0.53	0.43	1.38	0.09	1.31	-0.22
CANT 13438M001	E	0.47	0.69	0.42	-0.12	-0.30	-0.02	-0.22	-0.74
CANT 13438M001	U	3.63	4.92	-2.62	0.67	-0.46	-4.35	5.29	0.60
CREU 13432M001	N	1.12	1.01	-1.58	0.82	1.52	-0.02	0.97	0.31
CREU 13432M001	E	0.57	0.80	-0.12	-0.85	0.18	0.46	-0.17	0.52
CREU 13432M001	U	4.63	3.27	5.01	6.97	-4.41	-2.44	3.73	2.17
EBRE 13410M001	N	1.40	2.52	-1.66	0.65	0.13	-0.12	0.85	1.23
EBRE 13410M001	E	1.68	-2.72	-1.29	0.15	0.87	0.71	1.21	2.25
EBRE 13410M001	U	4.78	7.05	5.71	6.59	-2.56	-0.52	-2.08	-0.67
ELGE 19353S001	N	0.88	-0.14	-0.08	1.20	1.40	-0.15	1.12	-0.01
ELGE 19353S001	E	1.10	2.10	0.59	-0.72	-0.56	-0.91	-0.58	0.69
ELGE 19353S001	U	2.67	5.78	-0.24	0.31	-0.60	-0.09	1.64	2.51
EMAZ 17001M001	N	1.13	-0.93	-0.97	1.01	0.95	1.58	1.16	0.07
EMAZ 17001M001	E	0.38	-0.07	-0.54	-0.34	-0.51	0.25	0.27	-0.26
EMAZ 17001M001	U	3.33	3.54	3.28	0.91	-3.19	-5.43	-1.53	0.72
GERN 19389M001	N	0.99	0.31	-0.88	1.18	1.41	-0.06	1.28	0.06
GERN 19389M001	E	0.37	0.76	-0.08	0.11	-0.11	-0.02	-0.38	0.30
GERN 19389M001	U	2.22	1.66	-1.14	2.19	0.10	-0.53	3.03	3.37
HOND 15012M002	N	1.04	0.78	0.07	0.52	1.40	-0.12	1.64	-0.94
HOND 15012M002	E	0.48	0.71	0.20	-0.19	0.07	0.18	-0.81	0.38
HOND 15012M002	U	3.64	3.85	-0.89	2.99	-3.71	-2.13	4.23	4.31
IGEL 19352S001	N	1.37	-0.13	-0.16	1.59	2.08	1.69	1.18	0.22
IGEL 19352S001	E	0.80	1.06	0.16	-0.29	-0.84	0.14	-1.20	0.63
IGEL 19352S001	U	1.94	2.32	-2.44	0.86	-0.43	0.68	1.52	2.75
ISPS 19484M001	N	0.74	-0.27	0.21	0.40	0.87	0.23	1.41	0.46
ISPS 19484M001	E	0.46	0.36	0.41	-0.48	-0.39	0.72	-0.14	0.15
ISPS 19484M001	U	3.52	5.16	-1.40	2.74	-1.60	-2.68	1.65	5.09
KAST 19499M001	N	0.86	0.69	0.63	0.08	1.76	0.07	0.56	-0.39
KAST 19499M001	E	0.62	-0.14	1.36	-0.24	-0.60	0.09	0.05	0.04
KAST 19499M001	U	4.02	8.49	2.38	0.64	-3.24	-0.63	-1.03	2.63
LARE 19440M001	N	1.23	0.30	-0.28	1.72	2.09	-0.75	0.16	-1.02
LARE 19440M001	E	1.00	0.21	1.65	0.29	-1.31	0.10	-0.71	-0.98
LARE 19440M001	U	1.89	0.57	-0.41	3.26	-2.39	-1.76	1.09	0.61
LAZK 19354S001	N	1.27	2.73	0.05	0.28	1.10	-0.92	-0.30	0.16
LAZK 19354S001	E	0.76	0.34	0.30	-0.02	0.75	-1.15	0.46	1.08
LAZK 19354S001	U	5.74	-5.47	-2.38	2.20	-0.13	4.71	11.60	0.72
LEIT 19428M001	N	1.04	2.12	0.29	0.27	-0.42	0.99	0.67	-0.43
LEIT 19428M001	E	1.17	0.25	-1.01	-0.39	-1.20	1.70	1.59	-0.37
LEIT 19428M001	U	4.34	5.59	0.90	3.28	2.23	-5.96	-2.32	4.90

ORDN 19427M001	N	1.58	3.27	-0.35	0.20	1.23	-1.37	0.68	-0.53
ORDN 19427M001	E	0.96	-0.67	-0.05	-1.51	0.31	0.37	0.42	1.56
ORDN 19427M001	U	2.56	2.33	-1.02	3.38	-1.37	2.52	2.39	2.72
PAS2 19351S001	N	0.61			0.15		0.30	0.78	0.63
PAS2 19351S001	E	0.36			-0.45		0.21	0.14	0.35
PAS2 19351S001	U	3.86			6.23		-0.64	2.03	-1.20
PASA 19351S001	N	0.72	-0.08	0.02	0.63	1.21	0.28	1.02	0.30
PASA 19351S001	E	0.35	0.13	-0.17	-0.04	-0.45	0.61	0.30	0.15
PASA 19351S001	U	3.09	4.66	-1.87	5.33	0.23	-0.52	1.72	-0.48
RID1 13448M002	N	1.50	-2.95	-1.12	0.71	1.65	0.31	-0.01	0.43
RID1 13448M002	E	0.64	-0.83	-0.09	0.14	0.28	0.69	0.45	0.98
RID1 13448M002	U	3.23	6.69	0.46	3.36	-0.23	-0.65	0.87	2.28
SALA 13469M001	N	1.25	-0.19	1.59	0.20	0.24	0.24	-0.75	-2.46
SALA 13469M001	E	0.65	0.18	0.62	-0.79	-0.76	-0.02	0.03	-0.97
SALA 13469M001	U	3.31	-1.24	-7.14	-0.73	1.39	-1.02	3.15	-0.21
SCDA 10088M002	N	1.38	0.61	-0.78	0.37	2.92	1.00	-0.56	-0.67
SCDA 10088M002	E	1.04	1.90	0.92	-0.14	-0.85	-0.48	-0.98	-0.28
SCDA 10088M002	U	2.61	1.91	-2.76	2.07	-0.95	1.86	2.09	4.07
SOPU 19386M001	N	0.87	-0.02	0.10	0.47	1.33	-0.44	1.47	0.39
SOPU 19386M001	E	0.51	0.59	0.36	-0.77	-0.21	0.09	-0.09	0.65
SOPU 19386M001	U	2.93	4.04	-2.87	3.54	-0.44	-0.18	1.67	3.36
TERU 13487M001	N	0.81	0.35	-1.13	-0.86	-1.20	-0.22	-0.44	-0.36
TERU 13487M001	E	0.62	0.12	-0.63	-0.09	0.52	0.50	1.06	-0.46
TERU 13487M001	U	2.89	-0.89	3.92	-4.86	-0.58	-0.90	2.34	-1.96
VITO 19385M001	N	1.29	0.05	-2.21	0.61	1.48	-0.20	1.08	1.19
VITO 19385M001	E	0.81	0.49	1.14	0.69	-1.33	-0.34	-0.09	-0.07
VITO 19385M001	U	3.66	4.87	1.59	5.10	-0.12	-4.19	2.37	2.20
YEBE 13420M001	N	1.43	1.31	1.33	0.28	0.43	0.19	-0.47	-2.87
YEBE 13420M001	E	0.57	0.58	-0.20	-0.31	-0.50	-0.02	0.12	-1.08
YEBE 13420M001	U	3.28	-3.09	-6.65	0.01	-0.60	0.67	3.16	0.10
ZARA 13462M001	N	0.90	-1.08	-0.87	0.99	1.05	-0.81	-0.30	0.28
ZARA 13462M001	E	0.57	-0.24	0.43	0.23	0.03	0.06	-0.09	1.29
ZARA 13462M001	U	4.81	2.54	0.73	10.15	3.21	1.03	-0.45	4.16

### 6.2 Datum verification

In this section, the datum verification is shown. A 3 parameter Helmert 3D (3 translations) is computed to the minimally constrained sites.

TRANSFORMATION IN EQUATORIAL SYSTEM (X, Y, Z):  
RESIDUALS IN LOCAL SYSTEM (NORTH, EAST, UP)

LIST OF REMOVED STATIONS:

OUTLIER CRITERIA: 15.00 15.00 20.00

NUM	NAME	FLG	RESIDUALS IN MILLIMETERS		
2	ALAC 13433M001	I W	0.47	-1.36	0.06
3	ALME 13437M001	I W	-1.96	0.17	-0.50
4	BCL1 19482M001	I W	-1.28	0.15	1.06
5	BELL 13431M001	I W	-0.90	0.53	0.26
6	BORR 13480M001	I W	-5.68	-1.13	-1.04
7	BRST 10004M004	I W	-0.46	-2.90	-1.00
8	CACE 13447M001	I W	1.27	0.04	1.83
9	CANT 13438M001	I W	1.58	-0.24	0.02
10	CASC 13909S001	I W	4.43	-1.14	1.20
11	CEU1 13449M002	I W	0.48	0.43	-4.44
13	EBRE 13410M001	I W	-5.72	1.27	-2.72
15	FLRS 131907M001	I W	2.44	-2.21	-6.60
16	FUER 31330M001	I W	1.17	1.26	0.79
18	HUEL 13451M001	I W	1.41	1.75	-3.09
19	IBIZ 13454S001	I W	-0.85	0.74	-3.41
20	IZAN 31309M002	I W	0.12	-2.82	-1.55
21	LAGO 13903M001	I W	1.12	-1.25	2.76
22	LLIV 13436M001	I W	-3.55	2.09	6.40
23	LPAL 81701M001	I W	-0.28	1.78	-1.46
24	LROC 10023M001	I W	-0.10	-0.38	2.71
25	MADR 13407S012	I W	-0.22	0.89	-0.39
26	MAL1 13444M002	I W	2.85	-1.09	-16.80
27	MALA 13443M001	I W	1.75	1.08	7.30
28	MALL 13444M001	I W	-1.20	0.57	-4.83
29	MAS1 31303M002	I W	-1.78	-2.98	-0.69
30	MELI 19379M001	I W	-0.39	1.26	0.55
31	PDEL 31906M004	I W	2.90	1.28	6.65
32	SCOA 10088M002	I W	-0.20	-1.09	-11.93
33	SFER 13402M004	I W	-1.72	-3.67	7.80
34	SOPU 19386M001	I W	0.89	0.86	3.16
35	VALE 13439M001	I W	0.40	2.93	-5.99
36	VIGO 13450M001	I W	3.90	1.64	3.85
37	VILL 13406M001	I W	-0.18	-1.24	4.62
38	YEBE 13420M001	I W	-0.20	-0.27	6.72
39	ZARA 13462M001	I W	-0.31	1.35	2.49
40	ZIMM 14001M004	I W	-1.96	-0.64	6.61
RMS / COMPONENT			2.19	1.59	5.20
IQR			2.27	2.40	5.09
MEAN			-0.05	-0.07	0.01
MEDIAN			-0.19	0.16	0.16
MIN			-5.72	-3.67	-16.80
MAX			4.43	2.93	7.80
OVERALL RMS/IQR/MAX(3D)			3.38	2.53	17.08
					MAL1 13444M002 #SUM
ALL RMS / COMPONENT			2.19	1.59	5.20
ALL IQR			2.27	2.40	5.09
ALL MEAN			-0.05	-0.07	0.01
ALL MEDIAN			-0.19	0.16	0.16
ALL MIN			-5.72	-3.67	-16.80
ALL MAX			4.43	2.93	7.80
ALL OVERALL RMS/IQR/MAX(3D)			3.38	2.53	17.08
					MAL1 13444M002 #SUM_ALL

NUMBER OF PARAMETERS : 3  
NUMBER OF STATIONS : 36  
NUMBER OF COORDINATES : 108  
RMS OF TRANSFORMATION : 3.38 MM

PARAMETERS:

TRANSLATION IN X : -0.00 +- 0.56 MM  
TRANSLATION IN Y : 0.01 +- 0.56 MM  
TRANSLATION IN Z : 0.01 +- 0.56 MM

NUMBER OF ITERATIONS : 1

### 6.3 Adjustment Statistics

In this section, the summary of the global adjustment and not subnetworks are shown. Also, the Helmert parameters of the combined solution with respect to the daily solutions are shown.

```
* STATISTICAL PARAMETER----- VALUE(S)-----
NUMBER OF OBSERVATIONS          17962761
NUMBER OF UNKNOWN               173239
NUMBER OF DEGREES OF FREEDOM    17769522
PHASE MEASUREMENTS SIGMA        0.00100
SAMPLING INTERVAL (SECONDS)     180
VARIANCE FACTOR                  2.520086174486906
```

## 7 Equipment

### 7.1 Receiver List

Serial numbers not shown.

```
*SITE PT SOLN T DATA_START_ DATA_END_ DESCRIPTION----- S/N_ FIRMWARE____
ACOR A 1 P 26:074:00000 26:080:86370 LEICA GR50 -----
ALDA A 1 P 26:074:00000 26:080:86370 LEICA GR30 -----
ALSA A 1 P 26:074:00000 26:080:86370 LEICA GR50 -----
AMUR A 1 P 26:074:00000 26:080:86370 LEICA GR30 -----
BIDA A 1 P 26:074:00000 26:080:86370 LEICA GR10 -----
BRZR A 1 P 26:074:00000 26:080:86370 LEICA GR30 -----
CACE A 1 P 26:074:00000 26:080:86370 LEICA GR50 -----
CANT A 1 P 26:074:00000 26:080:86370 LEICA GR50 -----
CREU A 1 P 26:074:00000 26:080:86370 LEICA GR50 -----
EBRE A 1 P 26:074:00000 26:080:86370 LEICA GR50 -----
ELGE A 1 P 26:074:00000 26:080:86370 LEICA GR30 -----
EMAZ A 1 P 26:074:00000 26:080:86370 LEICA GR30 -----
GERN A 1 P 26:074:00000 26:080:86370 LEICA GR30 -----
HOND A 1 P 26:074:00000 26:080:86370 LEICA GR50 -----
IGEL A 1 P 26:074:00000 26:080:86370 LEICA GR30 -----
ISPS A 1 P 26:074:00000 26:080:86370 LEICA GR50 -----
KAST A 1 P 26:074:00000 26:080:86370 LEICA GR30 -----
LARE A 1 P 26:074:00000 26:080:86370 LEICA GR50 -----
LAZK A 1 P 26:074:00000 26:080:86370 LEICA GR30 -----
LEIT A 1 P 26:074:00000 26:080:86370 LEICA GR50 -----
ORON A 1 P 26:074:00000 26:080:86370 LEICA GR50 -----
PAS2 A 1 P 26:076:00000 26:080:86370 STONEX SC2200 -----
PASA A 1 P 26:074:00000 26:080:86370 LEICA GR30 -----
RIO1 A 1 P 26:074:00000 26:080:86370 LEICA GR50 -----
SALA A 1 P 26:074:00000 26:080:86370 LEICA GR50 -----
SCDA A 1 P 26:074:00000 26:080:86370 LEICA GR50 -----
SOPU A 1 P 26:074:00000 26:080:86370 LEICA GR30 -----
TERU A 1 P 26:074:00000 26:080:86370 LEICA GR50 -----
VITO A 1 P 26:074:00000 26:080:86370 LEICA GR30 -----
YEBE A 1 P 26:074:00000 26:080:86370 LEICA GR50 -----
ZARA A 1 P 26:074:00000 26:080:86370 TRIMBLE NETR9 -----
```

### 7.2 Antennas

Serial number ONLY provided in case individual calibrations are used.

```
*SITE PT SOLN T DATA_START_ DATA_END_ DESCRIPTION----- S/N_ DAZI
ACOR A 1 P 26:074:00000 26:080:86370 LEIAT504 LEIS ----
ALDA A 1 P 26:074:00000 26:080:86370 LEIAS10 NONE ----
ALSA A 1 P 26:074:00000 26:080:86370 LEIAR10 NONE ----
AMUR A 1 P 26:074:00000 26:080:86370 LEIAS10 NONE ----
BIDA A 1 P 26:074:00000 26:080:86370 LEIAS10 NONE ----
BRZR A 1 P 26:074:00000 26:080:86370 LEIAS10 NONE ----
CACE A 1 P 26:074:00000 26:080:86370 LEIAR20 LEIM ----
CANT A 1 P 26:074:00000 26:080:86370 LEIAR25_R4 LEIT ----
CREU A 1 P 26:074:00000 26:080:86370 LEIAR25_R4 NONE ----
EBRE A 1 P 26:074:00000 26:080:86370 LEIAR25_R4 NONE ----
ELGE A 1 P 26:074:00000 26:080:86370 LEIAR25_R4 LEIT ----
EMAZ A 1 P 26:074:00000 26:080:86370 LEIAS10 NONE ----
GERN A 1 P 26:074:00000 26:080:86370 LEIAS10 NONE ----
HOND A 1 P 26:074:00000 26:080:86370 LEIAR20 LEIM ----
IGEL A 1 P 26:074:00000 26:080:86370 LEIAR20 LEIM ----
ISPS A 1 P 26:074:00000 26:080:86370 LEIAR20 LEIM ----
KAST A 1 P 26:074:00000 26:080:86370 LEIAS10 NONE ----
LARE A 1 P 26:074:00000 26:080:86370 LEIAR20 LEIM ----
LAZK A 1 P 26:074:00000 26:080:86370 LEIAR25_R4 LEIT ----
LEIT A 1 P 26:074:00000 26:080:86370 LEIAR10 NONE ----
ORON A 1 P 26:074:00000 26:080:86370 LEIAR10 NONE ----
PAS2 A 1 P 26:076:00000 26:080:86370 LEIAR20 LEIM ----
PASA A 1 P 26:074:00000 26:080:86370 LEIAR20 LEIM ----
RIO1 A 1 P 26:074:00000 26:080:86370 LEIAR25_R4 LEIT ----
SALA A 1 P 26:074:00000 26:080:86370 LEIAR25 NONE ----
SCDA A 1 P 26:074:00000 26:080:86370 TRM55971.00 NONE ----
SOPU A 1 P 26:074:00000 26:080:86370 LEIAS10 NONE ----
TERU A 1 P 26:074:00000 26:080:86370 LEIAR20 LEIM ----
VITO A 1 P 26:074:00000 26:080:86370 LEIAS10 NONE ----
YEBE A 1 P 26:074:00000 26:080:86370 LEIAR20 LEIM ----
ZARA A 1 P 26:074:00000 26:080:86370 TRM29659.00 NONE ----
```

### 7.3 Eccentricities

*S	PT	SOLN	T	DATA_START	DATA_END	AXE	UP	NORTH	EAST
AR	P						ARP	BENCHMARK	(M)
ACDR	A	1	P	26:074:00000	26:080:86370	UNE	3.0460	0.0000	0.0000
ALDA	A	1	P	26:074:00000	26:080:86370	UNE	0.0000	0.0000	0.0000
ALSA	A	1	P	26:074:00000	26:080:86370	UNE	0.0000	0.0000	0.0000
AMUR	A	1	P	26:074:00000	26:080:86370	UNE	0.0000	0.0000	0.0000
BIDA	A	1	P	26:074:00000	26:080:86370	UNE	0.0000	0.0000	0.0000
BRZR	A	1	P	26:074:00000	26:080:86370	UNE	0.0771	0.0000	0.0000
CACE	A	1	P	26:074:00000	26:080:86370	UNE	0.0600	0.0000	0.0000
CANT	A	1	P	26:074:00000	26:080:86370	UNE	3.0490	0.0000	0.0000
CREU	A	1	P	26:074:00000	26:080:86370	UNE	0.0770	0.0000	0.0000
EBRE	A	1	P	26:074:00000	26:080:86370	UNE	0.0770	0.0000	0.0000
ELGE	A	1	P	26:074:00000	26:080:86370	UNE	0.0000	0.0000	0.0000
EMAZ	A	1	P	26:074:00000	26:080:86370	UNE	0.0350	0.0000	0.0000
GERN	A	1	P	26:074:00000	26:080:86370	UNE	0.0771	0.0000	0.0000
HOND	A	1	P	26:074:00000	26:080:86370	UNE	0.0771	0.0000	0.0000
IGEL	A	1	P	26:074:00000	26:080:86370	UNE	0.0000	0.0000	0.0000
ISPS	A	1	P	26:074:00000	26:080:86370	UNE	0.0350	0.0000	0.0000
KAST	A	1	P	26:074:00000	26:080:86370	UNE	0.0350	0.0000	0.0000
LARE	A	1	P	26:074:00000	26:080:86370	UNE	0.0000	0.0000	0.0000
LAZK	A	1	P	26:074:00000	26:080:86370	UNE	0.0000	0.0000	0.0000
LEIT	A	1	P	26:074:00000	26:080:86370	UNE	0.0000	0.0000	0.0000
ORDN	A	1	P	26:074:00000	26:080:86370	UNE	0.0000	0.0000	0.0000
PAS2	A	1	P	26:076:00000	26:080:86370	UNE	0.0000	0.0000	0.0000
PASA	A	1	P	26:074:00000	26:080:86370	UNE	0.0000	0.0000	0.0000
RID1	A	1	P	26:074:00000	26:080:86370	UNE	0.0606	0.0000	0.0000
SALA	A	1	P	26:074:00000	26:080:86370	UNE	0.0600	0.0000	0.0000
SCDA	A	1	P	26:074:00000	26:080:86370	UNE	0.0000	0.0000	0.0000
SOPU	A	1	P	26:074:00000	26:080:86370	UNE	0.0771	0.0000	0.0000
TERU	A	1	P	26:074:00000	26:080:86370	UNE	0.0600	0.0000	0.0000
VITO	A	1	P	26:074:00000	26:080:86370	UNE	0.0000	0.0000	0.0000
YEBE	A	1	P	26:074:00000	26:080:86370	UNE	0.0600	0.0000	0.0000
ZARA	A	1	P	26:074:00000	26:080:86370	UNE	3.2590	0.0000	0.0000

## 8 Inconsistencies (logsheet-RINEX metadata)

The following inconsistencies were found comparing the data available in the logsheets and the RINEX headers:

2026-04-05 05:53 UTC	ALDA0740.260	RECEIVER FIRM. VERS.	4.83/7.900	->	4.80/7.900	(source: alda00esp_20241008.log
2026-04-05 08:46 UTC	ALDA0750.260	RECEIVER FIRM. VERS.	4.83/7.900	->	4.80/7.900	(source: alda00esp_20241008.log
2026-04-05 11:39 UTC	ALDA0760.260	RECEIVER FIRM. VERS.	4.83/7.900	->	4.80/7.900	(source: alda00esp_20241008.log
2026-04-05 14:32 UTC	ALDA0770.260	RECEIVER FIRM. VERS.	4.83/7.900	->	4.80/7.900	(source: alda00esp_20241008.log
2026-04-05 17:28 UTC	ALDA0780.260	RECEIVER FIRM. VERS.	4.83/7.900	->	4.80/7.900	(source: alda00esp_20241008.log
2026-04-05 20:22 UTC	ALDA0790.260	RECEIVER FIRM. VERS.	4.83/7.900	->	4.80/7.900	(source: alda00esp_20241008.log
2026-04-05 23:20 UTC	ALDA0800.260	RECEIVER FIRM. VERS.	4.83/7.900	->	4.80/7.900	(source: alda00esp_20241008.log
2026-04-05 05:53 UTC	AMUR0740.260	RECEIVER FIRM. VERS.	4.83/7.900	->	4.80/7.900	(source: amur00esp_20241008.log
2026-04-05 08:46 UTC	AMUR0750.260	RECEIVER FIRM. VERS.	4.83/7.900	->	4.80/7.900	(source: amur00esp_20241008.log
2026-04-05 11:39 UTC	AMUR0760.260	RECEIVER FIRM. VERS.	4.83/7.900	->	4.80/7.900	(source: amur00esp_20241008.log
2026-04-05 14:32 UTC	AMUR0770.260	RECEIVER FIRM. VERS.	4.83/7.900	->	4.80/7.900	(source: amur00esp_20241008.log
2026-04-05 17:28 UTC	AMUR0780.260	RECEIVER FIRM. VERS.	4.83/7.900	->	4.80/7.900	(source: amur00esp_20241008.log
2026-04-05 20:22 UTC	AMUR0790.260	RECEIVER FIRM. VERS.	4.83/7.900	->	4.80/7.900	(source: amur00esp_20241008.log
2026-04-05 23:20 UTC	AMUR0800.260	RECEIVER FIRM. VERS.	4.83/7.900	->	4.80/7.900	(source: amur00esp_20241008.log
2026-04-05 05:53 UTC	BIDA0740.260	RECEIVER TYPE	LEICA GR30	->	LEICA GR10	(source: bida_20200626.log
2026-04-05 05:53 UTC	BIDA0750.260	RECEIVER FIRM. VERS.	4.83/7.900	->	4.52/6.525	(source: bida_20200626.log
2026-04-05 08:46 UTC	BIDA0760.260	RECEIVER TYPE	LEICA GR30	->	LEICA GR10	(source: bida_20200626.log
2026-04-05 08:46 UTC	BIDA0770.260	RECEIVER FIRM. VERS.	4.83/7.900	->	4.52/6.525	(source: bida_20200626.log
2026-04-05 11:39 UTC	BIDA0780.260	RECEIVER TYPE	LEICA GR30	->	LEICA GR10	(source: bida_20200626.log
2026-04-05 11:39 UTC	BIDA0790.260	RECEIVER FIRM. VERS.	4.83/7.900	->	4.52/6.525	(source: bida_20200626.log
2026-04-05 14:32 UTC	BIDA0760.260	RECEIVER TYPE	LEICA GR30	->	LEICA GR10	(source: bida_20200626.log
2026-04-05 14:32 UTC	BIDA0770.260	RECEIVER FIRM. VERS.	4.83/7.900	->	4.52/6.525	(source: bida_20200626.log
2026-04-05 17:28 UTC	BIDA0780.260	RECEIVER TYPE	LEICA GR30	->	LEICA GR10	(source: bida_20200626.log
2026-04-05 17:28 UTC	BIDA0790.260	RECEIVER FIRM. VERS.	4.83/7.900	->	4.52/6.525	(source: bida_20200626.log
2026-04-05 20:22 UTC	BIDA0790.260	RECEIVER TYPE	LEICA GR30	->	LEICA GR10	(source: bida_20200626.log
2026-04-05 20:22 UTC	BIDA0790.260	RECEIVER FIRM. VERS.	4.83/7.900	->	4.52/6.525	(source: bida_20200626.log
2026-04-05 23:20 UTC	BIDA0800.260	RECEIVER TYPE	LEICA GR30	->	LEICA GR10	(source: bida_20200626.log
2026-04-05 23:20 UTC	BIDA0800.260	RECEIVER FIRM. VERS.	4.83/7.900	->	4.52/6.525	(source: bida_20200626.log
2026-04-05 05:53 UTC	BRZR0740.260	RECEIVER FIRM. VERS.	4.83/7.900	->	4.80/7.900	(source: brzr00esp_20240315.log
2026-04-05 08:46 UTC	BRZR0750.260	RECEIVER FIRM. VERS.	4.83/7.900	->	4.80/7.900	(source: brzr00esp_20240315.log
2026-04-05 11:39 UTC	BRZR0760.260	RECEIVER FIRM. VERS.	4.83/7.900	->	4.80/7.900	(source: brzr00esp_20240315.log
2026-04-05 14:32 UTC	BRZR0770.260	RECEIVER FIRM. VERS.	4.83/7.900	->	4.80/7.900	(source: brzr00esp_20240315.log
2026-04-05 17:28 UTC	BRZR0780.260	RECEIVER FIRM. VERS.	4.83/7.900	->	4.80/7.900	(source: brzr00esp_20240315.log
2026-04-05 20:22 UTC	BRZR0790.260	RECEIVER FIRM. VERS.	4.83/7.900	->	4.80/7.900	(source: brzr00esp_20240315.log
2026-04-05 23:20 UTC	BRZR0800.260	RECEIVER FIRM. VERS.	4.83/7.900	->	4.80/7.900	(source: brzr00esp_20240315.log
2026-04-05 05:53 UTC	CANT0740.260	RECEIVER TYPE	LEICA GR10	->	LEICA GR50	(source: cant00esp_20250624.log
2026-04-05 05:53 UTC	CANT0750.260	RECEIVER FIRM. VERS.	4.00/6.713	->	4.80/7.900	(source: cant00esp_20250624.log
2026-04-05 08:46 UTC	CANT0760.260	RECEIVER TYPE	LEICA GR10	->	LEICA GR50	(source: cant00esp_20250624.log
2026-04-05 08:46 UTC	CANT0770.260	RECEIVER FIRM. VERS.	4.00/6.713	->	4.80/7.900	(source: cant00esp_20250624.log
2026-04-05 11:39 UTC	CANT0780.260	RECEIVER TYPE	LEICA GR10	->	LEICA GR50	(source: cant00esp_20250624.log
2026-04-05 11:39 UTC	CANT0790.260	RECEIVER FIRM. VERS.	4.00/6.713	->	4.80/7.900	(source: cant00esp_20250624.log
2026-04-05 14:32 UTC	CANT0760.260	RECEIVER TYPE	LEICA GR10	->	LEICA GR50	(source: cant00esp_20250624.log
2026-04-05 14:32 UTC	CANT0770.260	RECEIVER FIRM. VERS.	4.00/6.713	->	4.80/7.900	(source: cant00esp_20250624.log
2026-04-05 17:28 UTC	CANT0780.260	RECEIVER TYPE	LEICA GR10	->	LEICA GR50	(source: cant00esp_20250624.log
2026-04-05 17:28 UTC	CANT0790.260	RECEIVER FIRM. VERS.	4.00/6.713	->	4.80/7.900	(source: cant00esp_20250624.log
2026-04-05 20:22 UTC	CANT0790.260	RECEIVER TYPE	LEICA GR10	->	LEICA GR50	(source: cant00esp_20250624.log
2026-04-05 20:22 UTC	CANT0790.260	RECEIVER FIRM. VERS.	4.00/6.713	->	4.80/7.900	(source: cant00esp_20250624.log
2026-04-05 23:20 UTC	CANT0800.260	RECEIVER TYPE	LEICA GR10	->	LEICA GR50	(source: cant00esp_20250624.log
2026-04-05 23:20 UTC	CANT0800.260	RECEIVER FIRM. VERS.	4.00/6.713	->	4.80/7.900	(source: cant00esp_20250624.log
2026-04-05 05:53 UTC	EMAZ0740.260	RECEIVER FIRM. VERS.	4.83/7.900	->	4.80/7.900	(source: amaz00esp_20241008.log
2026-04-05 08:46 UTC	EMAZ0750.260	RECEIVER FIRM. VERS.	4.83/7.900	->	4.80/7.900	(source: amaz00esp_20241008.log
2026-04-05 11:39 UTC	EMAZ0760.260	RECEIVER FIRM. VERS.	4.83/7.900	->	4.80/7.900	(source: amaz00esp_20241008.log
2026-04-05 14:32 UTC	EMAZ0770.260	RECEIVER FIRM. VERS.	4.83/7.900	->	4.80/7.900	(source: amaz00esp_20241008.log
2026-04-05 17:28 UTC	EMAZ0780.260	RECEIVER FIRM. VERS.	4.83/7.900	->	4.80/7.900	(source: amaz00esp_20241008.log
2026-04-05 20:22 UTC	EMAZ0790.260	RECEIVER FIRM. VERS.	4.83/7.900	->	4.80/7.900	(source: amaz00esp_20241008.log
2026-04-05 23:20 UTC	EMAZ0800.260	RECEIVER FIRM. VERS.	4.83/7.900	->	4.80/7.900	(source: amaz00esp_20241008.log
2026-04-05 05:53 UTC	ISPS0740.260	ANTENNA SER. NO.		->	24238009	(source: isps00esp_20250114.log
2026-04-05 08:47 UTC	ISPS0750.260	ANTENNA SER. NO.		->	24238009	(source: isps00esp_20250114.log
2026-04-05 11:39 UTC	ISPS0760.260	ANTENNA SER. NO.		->	24238009	(source: isps00esp_20250114.log
2026-04-05 14:32 UTC	ISPS0770.260	ANTENNA SER. NO.		->	24238009	(source: isps00esp_20250114.log
2026-04-05 17:28 UTC	ISPS0780.260	ANTENNA SER. NO.		->	24238009	(source: isps00esp_20250114.log
2026-04-05 20:22 UTC	ISPS0790.260	ANTENNA SER. NO.		->	24238009	(source: isps00esp_20250114.log

```
2026-04-05 23:20 UTC | IPS0800.260 | ANTENNA SER. NO. | -> 24238009 (source: isps00esp_20250114.log
2026-04-05 05:53 UTC | KAST0740.260 | RECEIVER FIRM. VERS. | 4.83/7.900 -> 4.80/7.900 (source: kast00esp_20241008.log
2026-04-05 08:47 UTC | KAST0750.260 | RECEIVER FIRM. VERS. | 4.83/7.900 -> 4.80/7.900 (source: kast00esp_20241008.log
2026-04-05 11:39 UTC | KAST0760.260 | RECEIVER FIRM. VERS. | 4.83/7.900 -> 4.80/7.900 (source: kast00esp_20241008.log
2026-04-05 14:32 UTC | KAST0770.260 | RECEIVER FIRM. VERS. | 4.83/7.900 -> 4.80/7.900 (source: kast00esp_20241008.log
2026-04-05 17:28 UTC | KAST0780.260 | RECEIVER FIRM. VERS. | 4.83/7.900 -> 4.80/7.900 (source: kast00esp_20241008.log
2026-04-05 20:22 UTC | KAST0790.260 | RECEIVER FIRM. VERS. | 4.83/7.900 -> 4.80/7.900 (source: kast00esp_20241008.log
2026-04-05 23:20 UTC | KAST0800.260 | RECEIVER FIRM. VERS. | 4.83/7.900 -> 4.80/7.900 (source: kast00esp_20241008.log
2026-04-05 05:53 UTC | VITO0740.260 | RECEIVER FIRM. VERS. | 4.83/7.900 -> 4.80/7.900 (source: vito00esp_20241008.log
2026-04-05 08:47 UTC | VITO0750.260 | RECEIVER FIRM. VERS. | 4.83/7.900 -> 4.80/7.900 (source: vito00esp_20241008.log
2026-04-05 11:39 UTC | VITO0760.260 | RECEIVER FIRM. VERS. | 4.83/7.900 -> 4.80/7.900 (source: vito00esp_20241008.log
2026-04-05 14:32 UTC | VITO0770.260 | RECEIVER FIRM. VERS. | 4.83/7.900 -> 4.80/7.900 (source: vito00esp_20241008.log
2026-04-05 17:28 UTC | VITO0780.260 | RECEIVER FIRM. VERS. | 4.83/7.900 -> 4.80/7.900 (source: vito00esp_20241008.log
2026-04-05 20:22 UTC | VITO0790.260 | RECEIVER FIRM. VERS. | 4.83/7.900 -> 4.80/7.900 (source: vito00esp_20241008.log
2026-04-05 23:20 UTC | VITO0800.260 | RECEIVER FIRM. VERS. | 4.83/7.900 -> 4.80/7.900 (source: vito00esp_20241008.log
```

## 9 References

C. Boucher and Z. Altamimi (2011): *Specifications for reference frame fixing in the analysis of a EUREF GPS campaign*. [etrs89.ensg.ign.fr/memo-V8.pdf](https://etrs89.ensg.ign.fr/memo-V8.pdf)

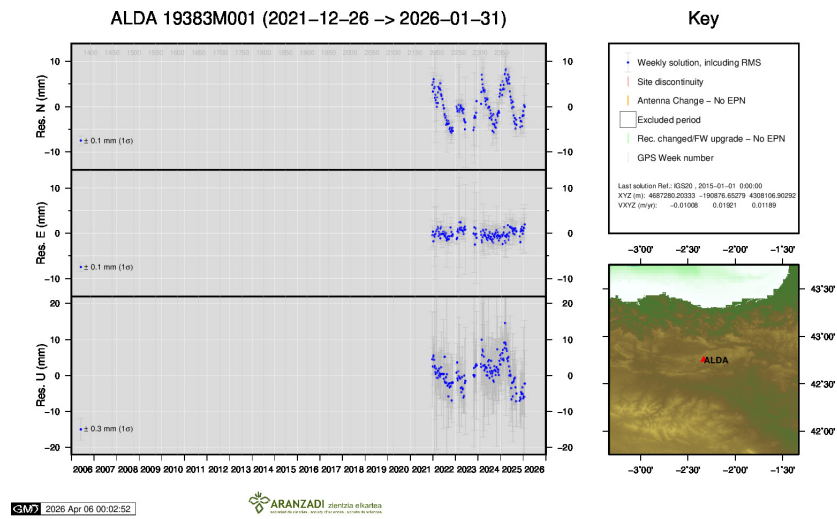
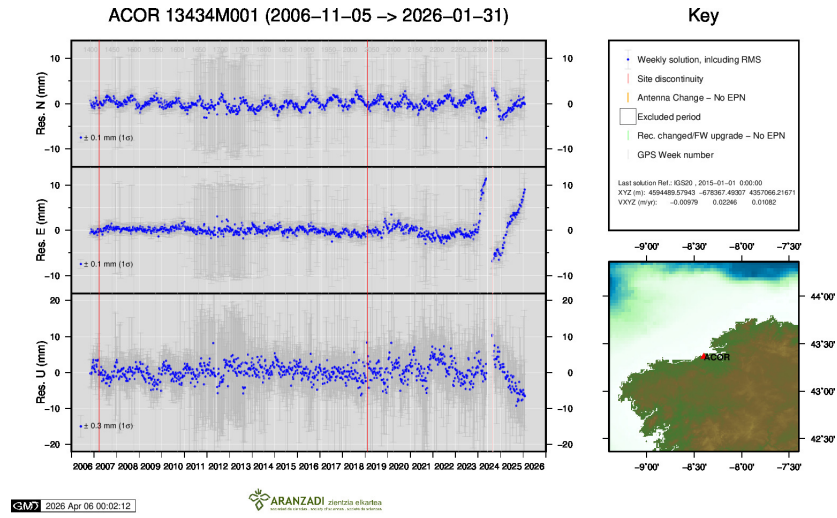
EPN Coordination Group and the EPN Central Bureau (2018): *Guidelines for the EPN Analysis Centres*. [epncb.oma.be/documentation/guidelines/guidelines\\_analysis\\_centres.pdf](https://epncb.oma.be/documentation/guidelines/guidelines_analysis_centres.pdf)

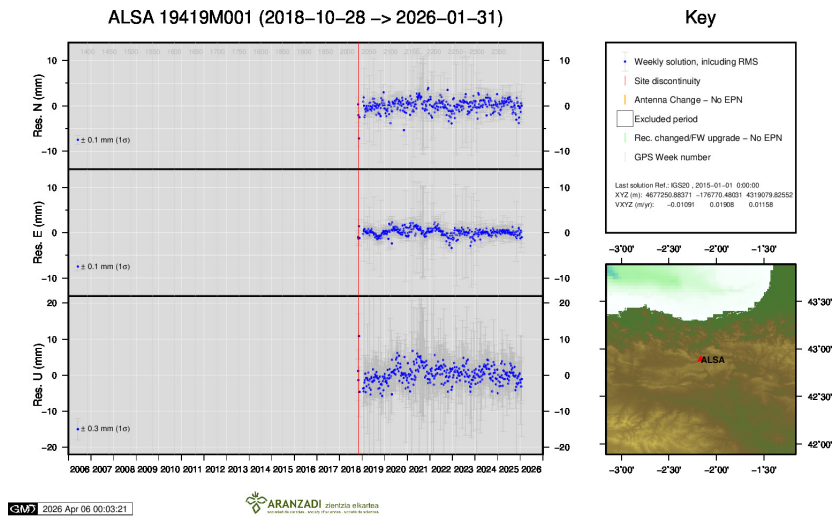
Johnston, G., Riddell, A., Hausler, G. (2017). The International GNSS Service. Teunissen, Peter J.G., Montenbruck, O. (Eds.), Springer Handbook of Global Navigation Satellite Systems (1st ed., pp. 967-982). Cham, Switzerland: Springer International Publishing. DOI: 10.1007/978-3-319-42928-1

Z. Altamimi (2018): *EUREF Technical Note 1: Relationship and Transformation between the International and the European Terrestrial Reference Systems*. [etrs89.ensg.ign.fr/pub/EUREF-TN-1.pdf](https://etrs89.ensg.ign.fr/pub/EUREF-TN-1.pdf)

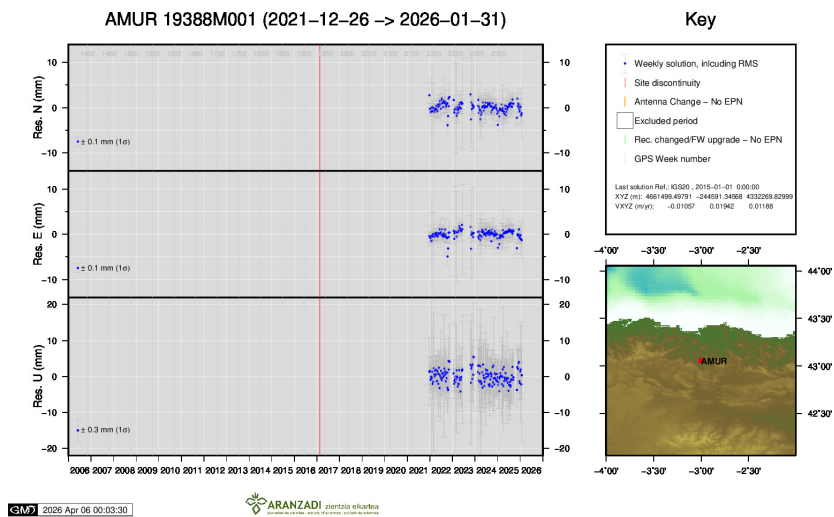
## 10 Cumulative Time Series

Time series of stations. Latest plots at: <http://geolabpasaia.org/gnss/ARA-net/TSeries/>, or click on the caption of each image.

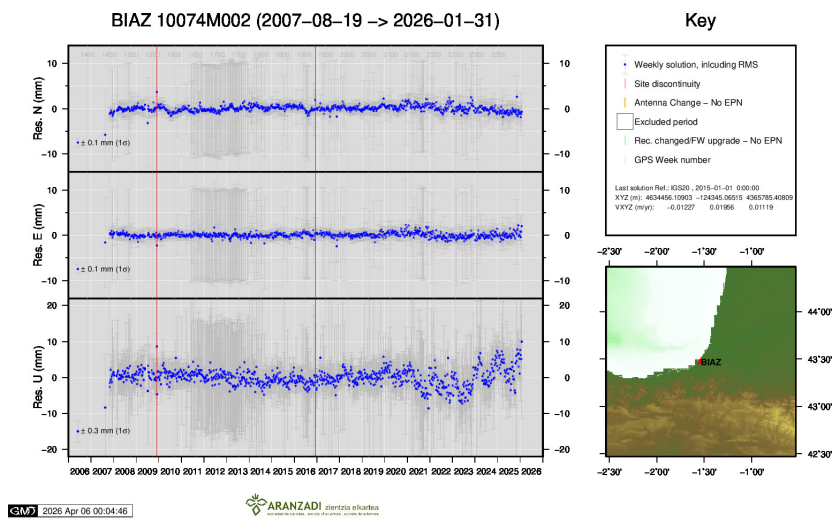




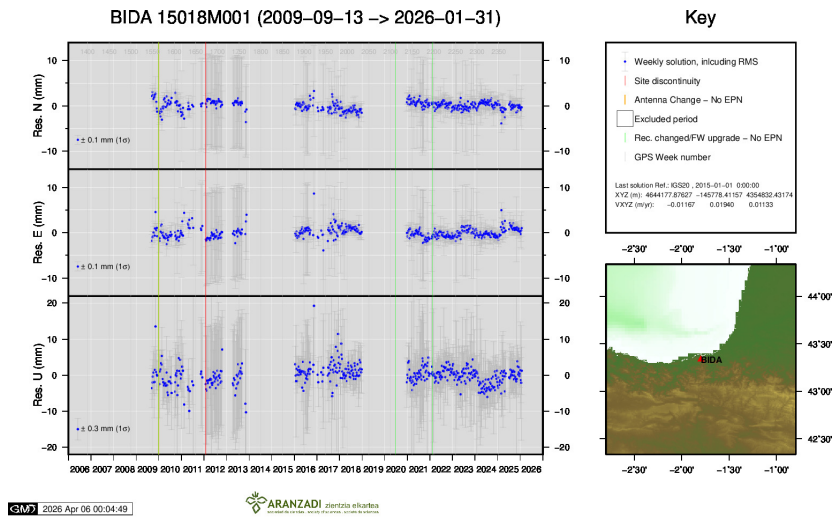
3 ) ALSA



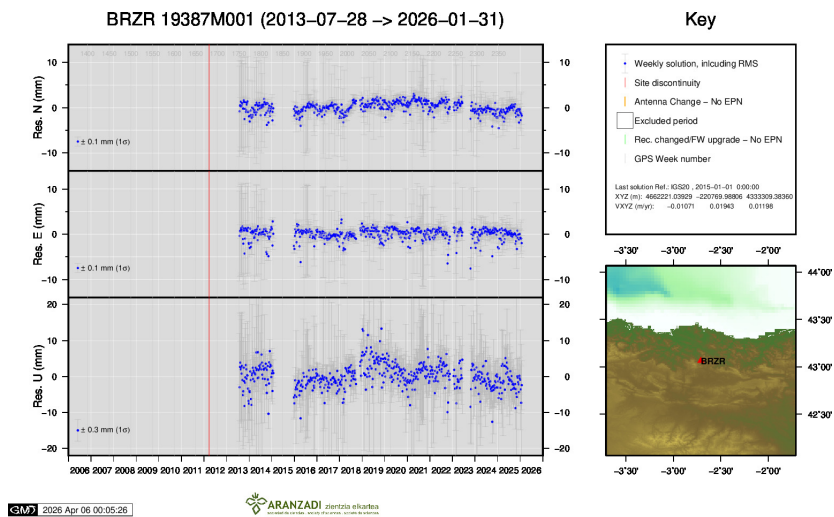
4 ) AMUR



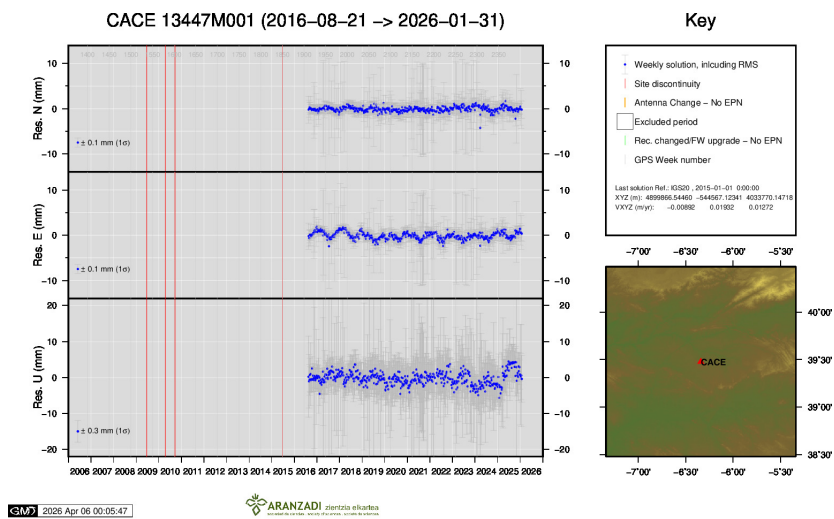
5 ) BIAZ



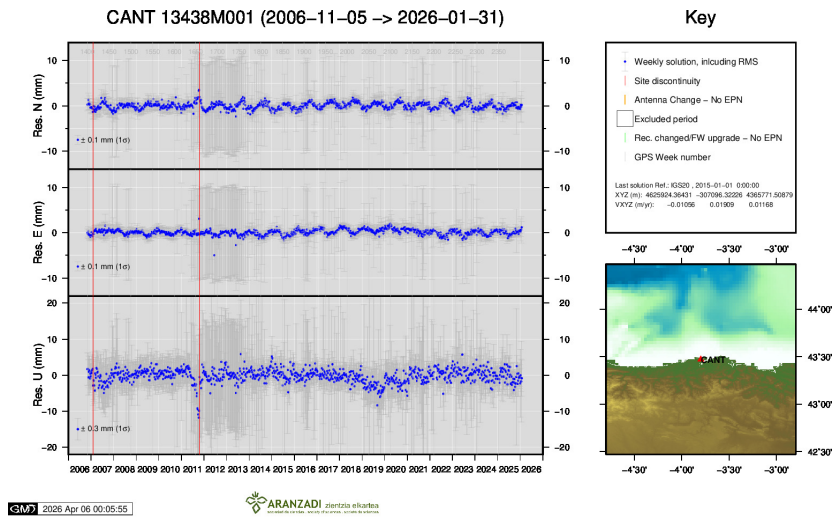
6 ) BIDA



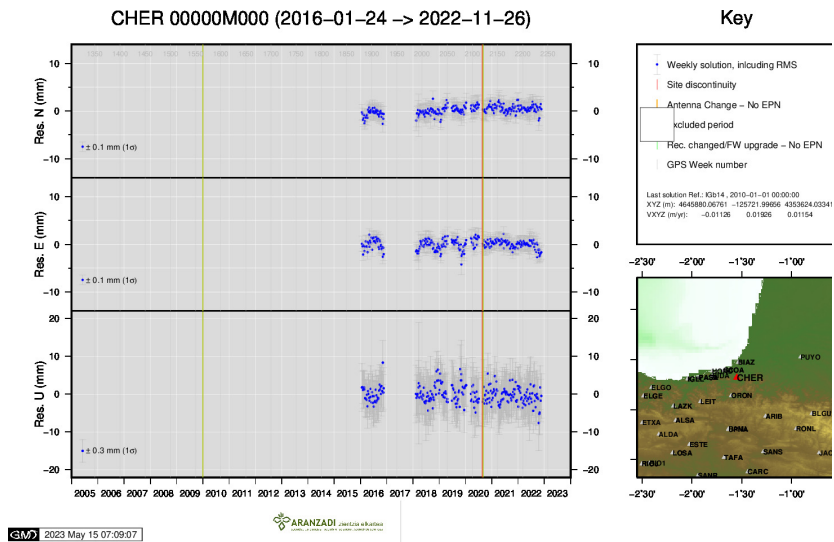
7 ) BRZR



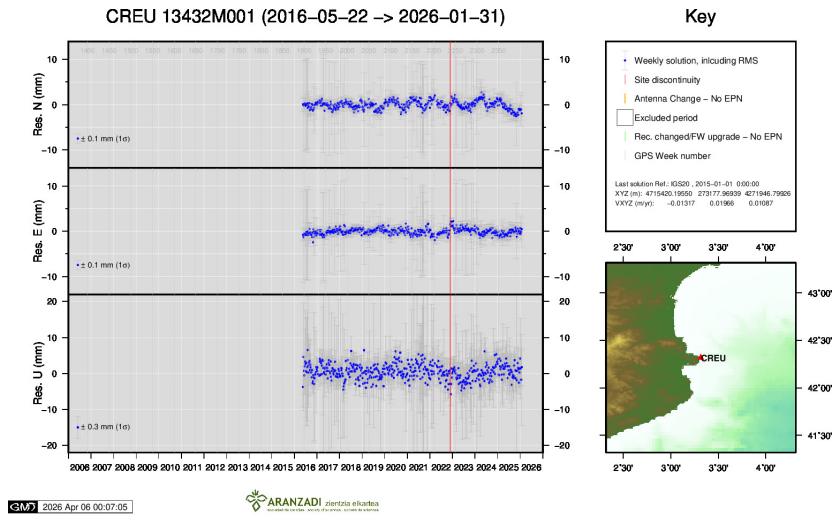
8 ) CACE



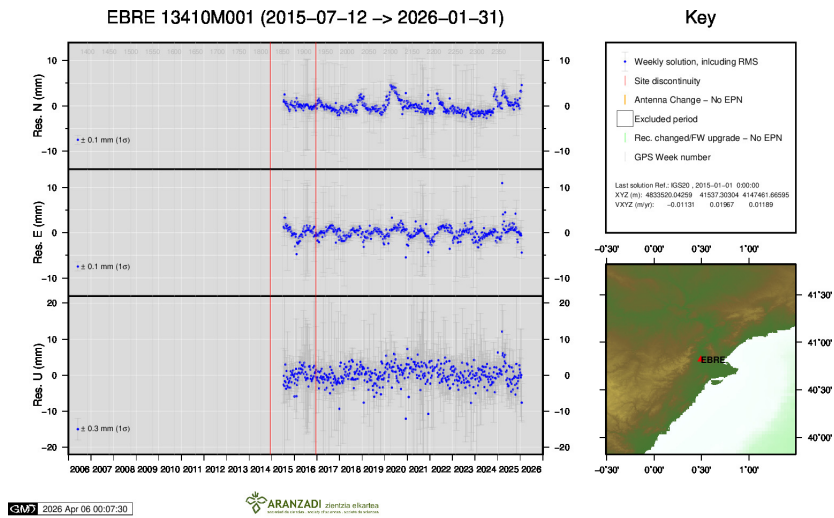
9 ) CANT



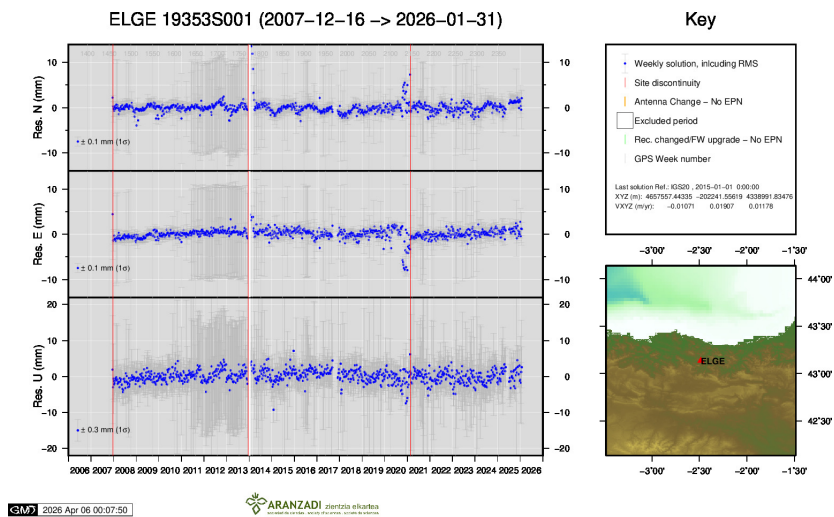
10 ) CHER



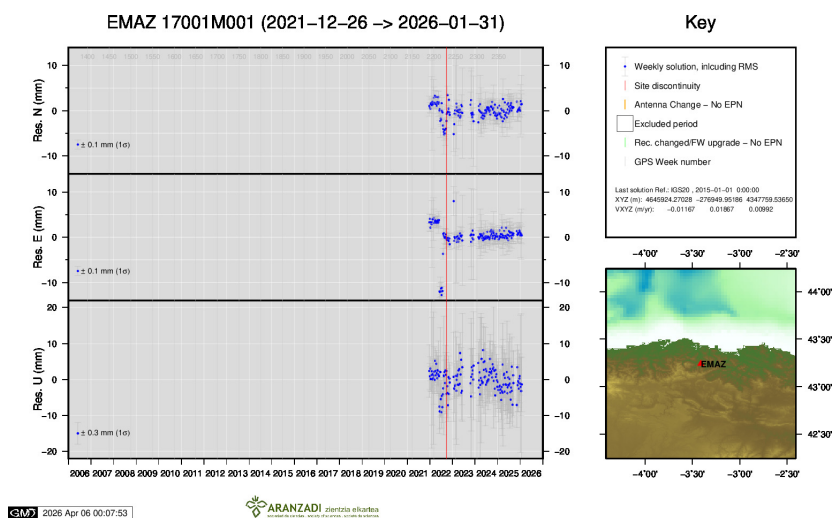
11 ) CREU



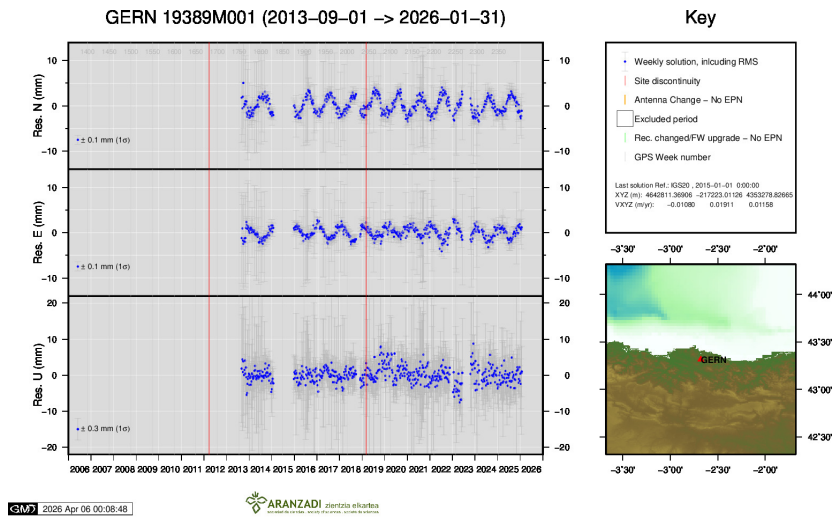
12 ) EBRE



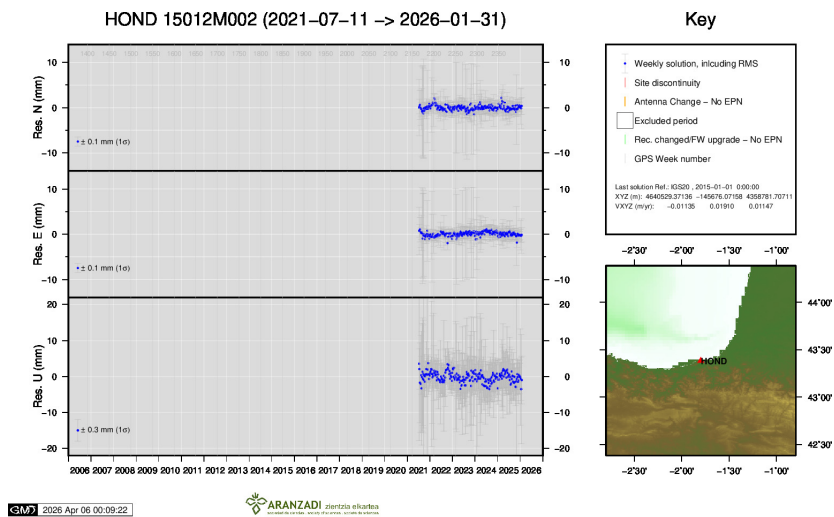
13 ) ELGE



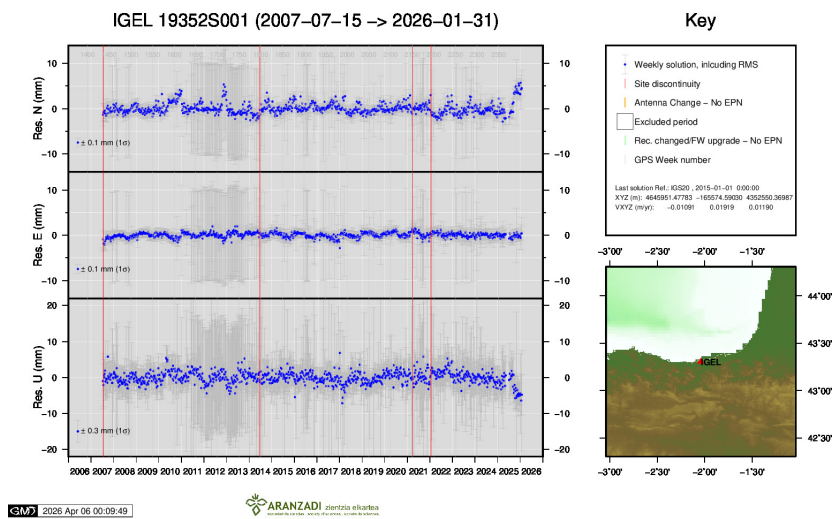
14 ) EMAZ



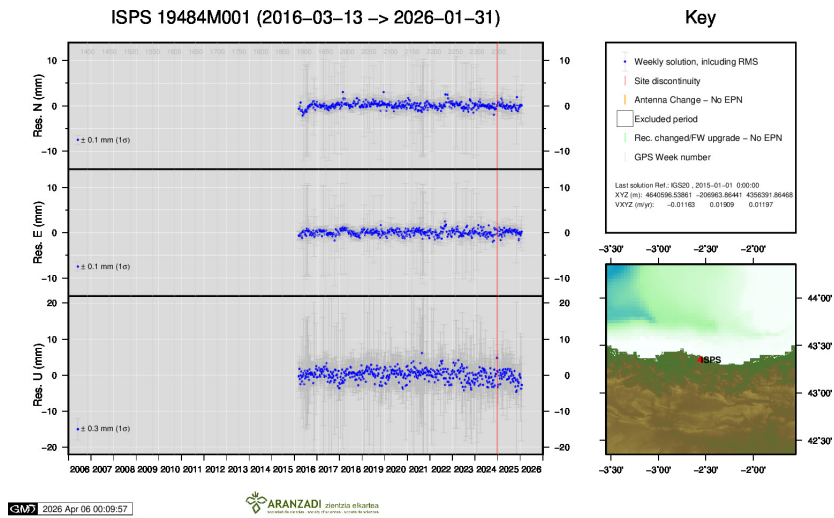
15 ) GERN



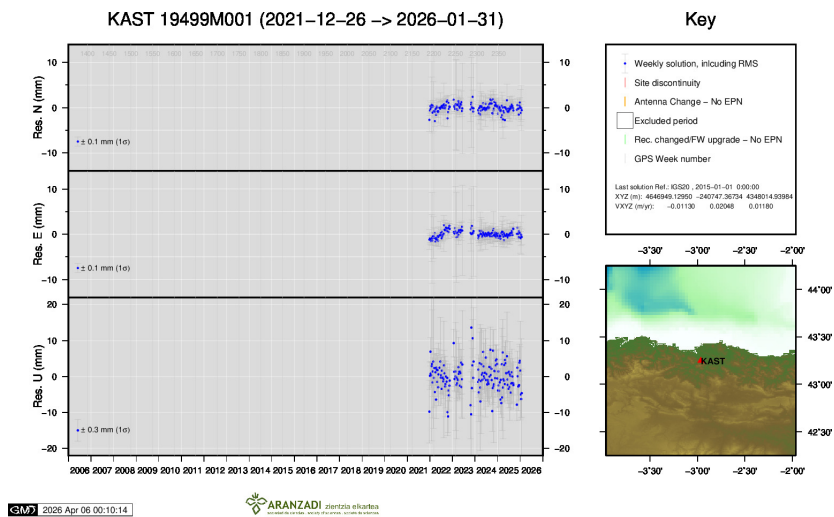
16 ) HOND



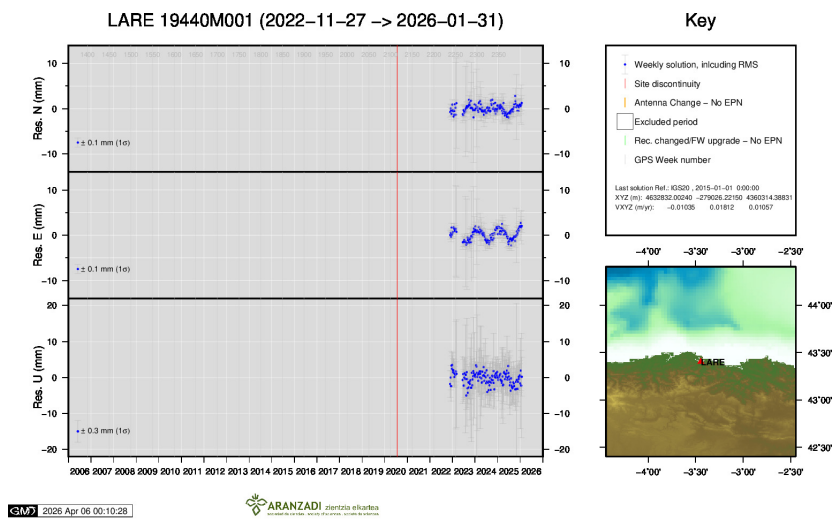
17 ) IGEL



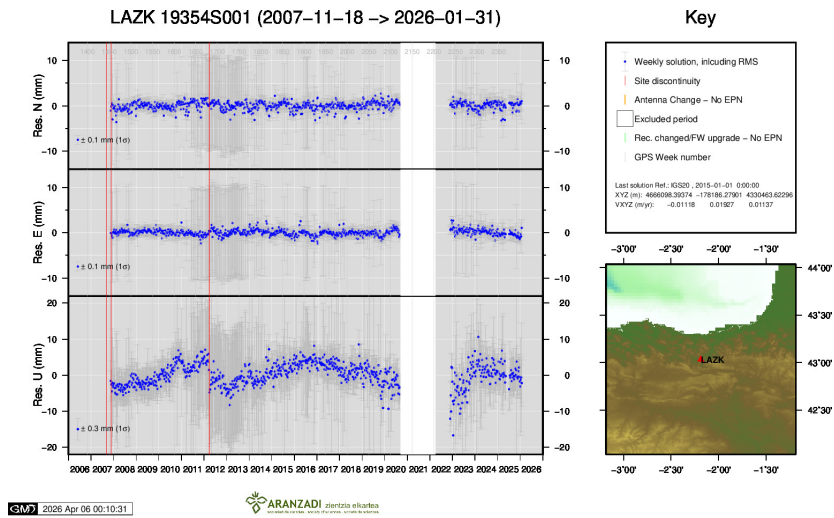
18 ) ISPS



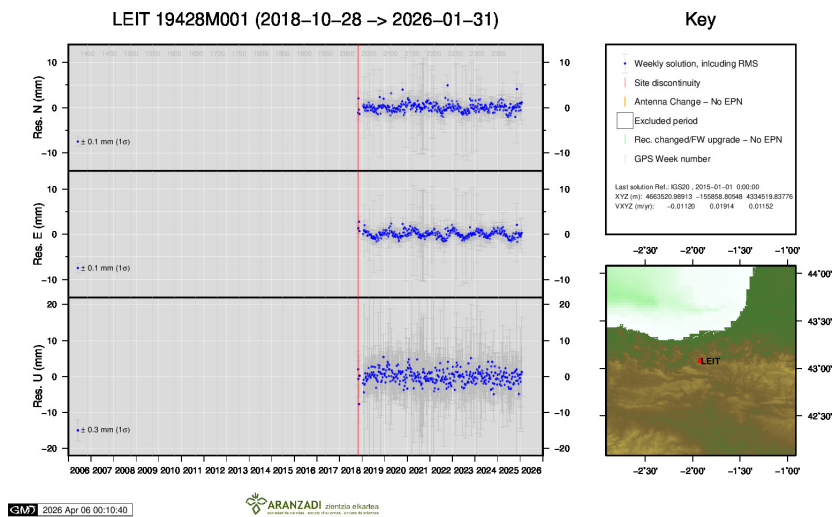
19 ) KAST



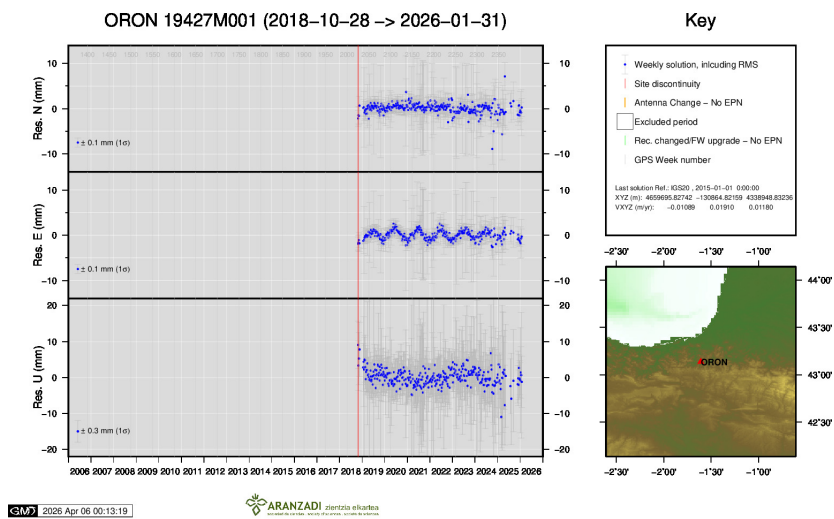
20 ) LARE



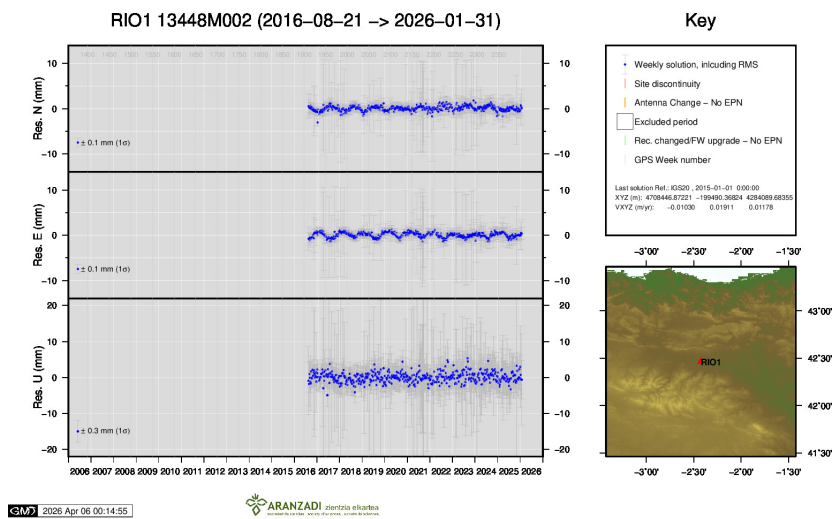
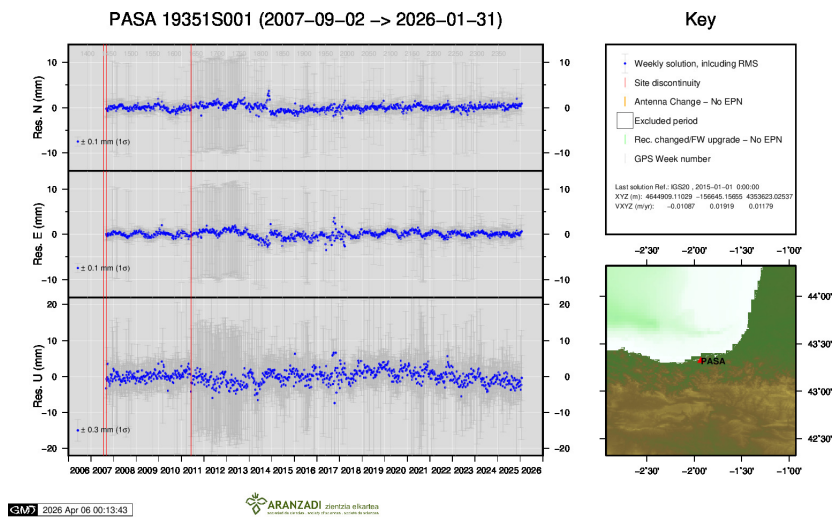
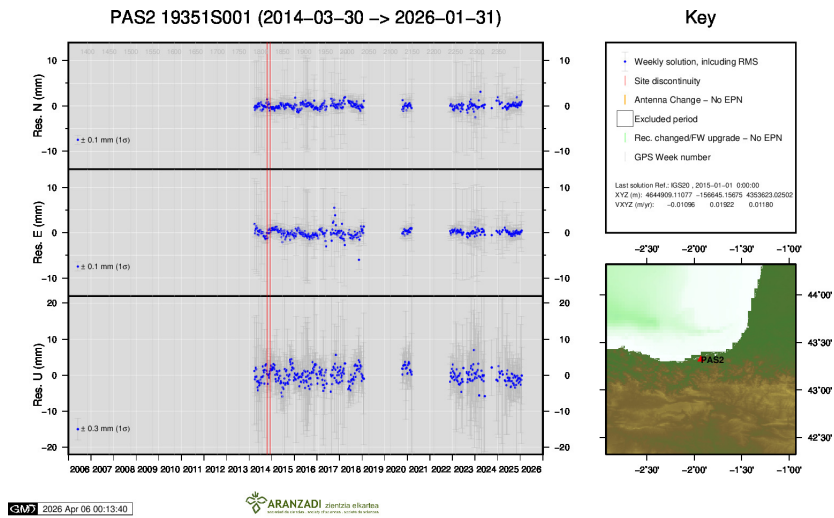
21 ) LAZK

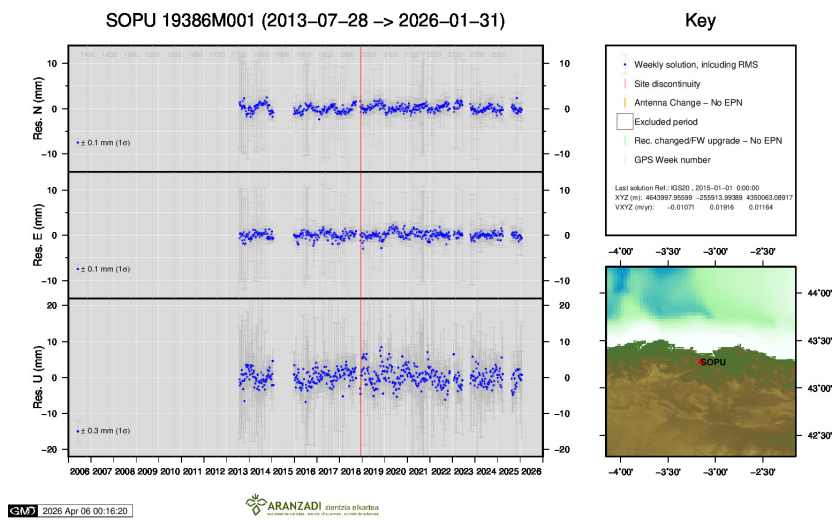
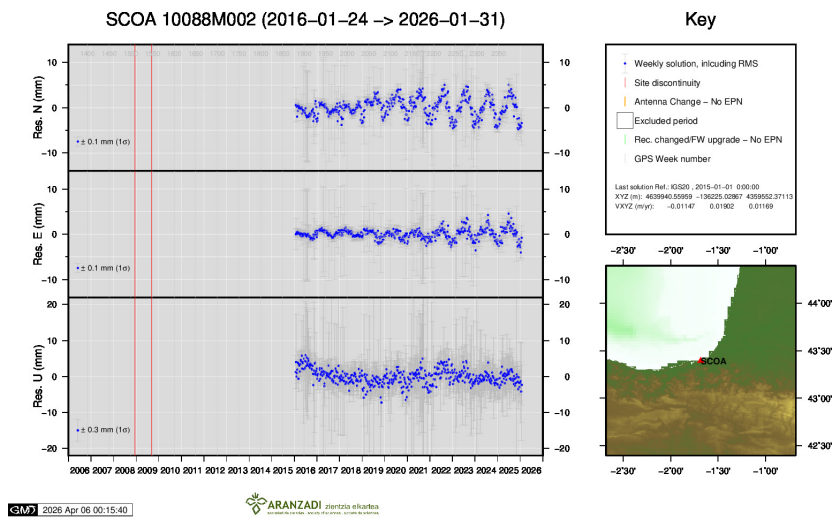
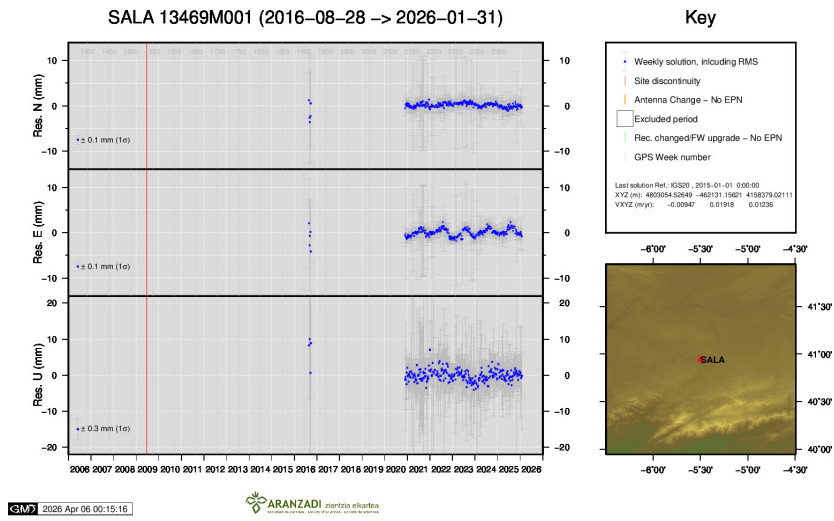


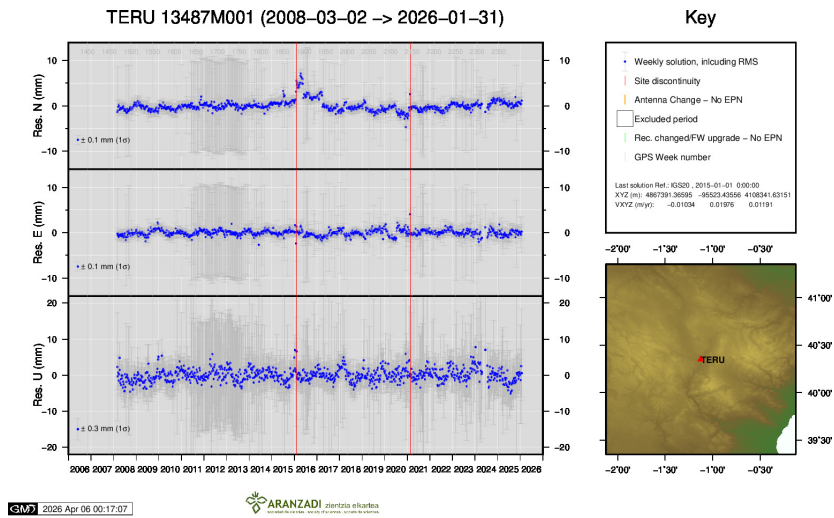
22 ) LEIT



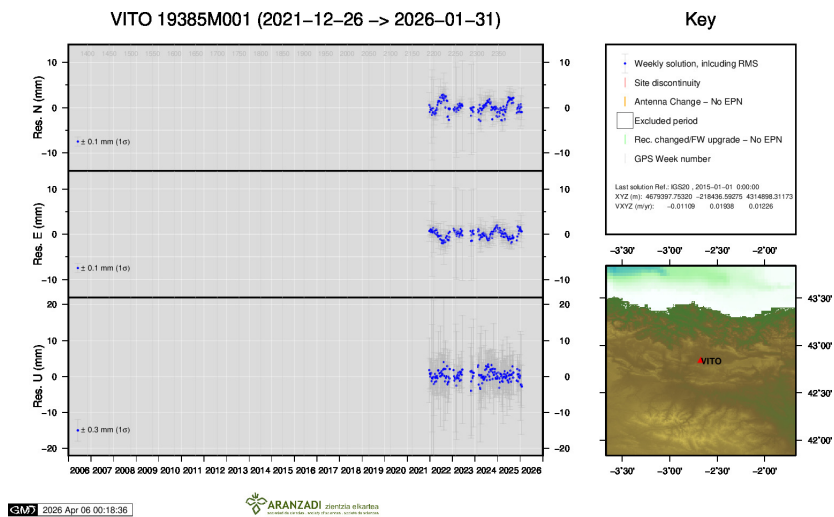
23 ) ORON



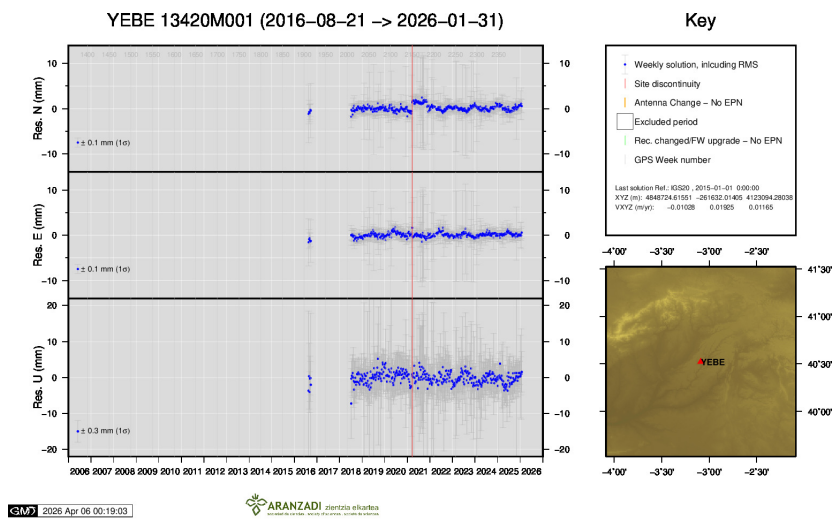




30 ) TERU



31 ) VITO



32 ) YEBE

